

# DECOROTIKA

HOME IS WHERE THE STYLE IS



DECOROTIKA



CANADA

UK

GERMANY

USA

FRANCE

SPAIN

SENEGAL

EXPORT  
*To 6 Countries*

# Global

Founded in Turkey in 2015, Decorotika Modular Furniture now delivers its modern design approach to all over the world, with divisions in USA (since 2017) and UK (since 2019).

## Wide range of product

Decorotika product portfolio with over 1000 different models is expanding day by day. Our purpose is to bring elegance to almost every corner of your home, from the TV stand and coffee table to the bookshelf and nightstand.



## Who we are?





# Modern design

While designing our products, we are inspired by modern life and simplicity, and we are nourished by the harmony of nature. We believe that everyone should feel comfortable at home. That's why we take care to combine elegance with function.

# Customer oriented

Our top priority is 100% customer satisfaction and will be glad to assist our customers with the best we can. With the latest technologies and experienced workforce, we can produce up to 20,000 new products per month at the Decorotika factory. In this way, we meet the needs of our customers in a short time.

# Who we are?

A decorative graphic of a stylized leaf or flower branch in a light gray line-art style, located in the top-left corner of the page.

# COLOR PALETTE

*"Add color to your life  
with different options."*



Cordoba



Dark Grey



Red



Sapphire Oak



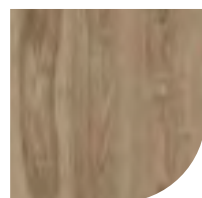
Black



Teak



Galaxy Brown



Oud



Walnut



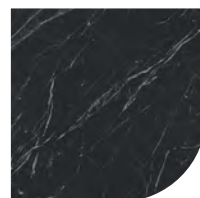
White



Vintage Linea



White Marble  
Effect



Black Marble  
Effect

# COLOURS & Patterns

# Find What You Need

- Collections
- TV Stands
- Office Desks
- Nightstands
- Coat Racks
- Coffee Tables
- Bookcases
- Sideboards
- Wall Shelf





A decorative graphic of a stylized leaf or flower branch, rendered in a light gray outline, positioned in the top left corner of the page.

# COLLECTION

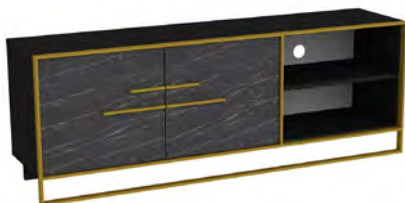
*"Refresh your home,  
with bright choices."*

# POLKA COLLECTION

## *Black marble effect*



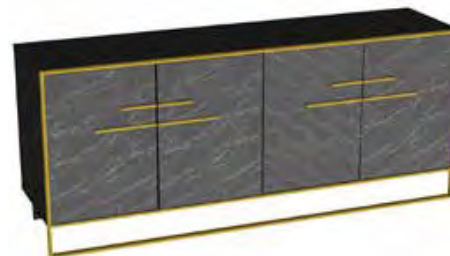
Combining the minimal design approach with impressive details, Polka Collection brings a new perspective to modern decoration approach with intricately designed and attractive finishings. Enriching the geometrical design lines with exclusively designed minimal handles, Polka Collection offers an aesthetic design line with its marble pattern details and walnut colour combinations.



### TV STAND

POL71TSB02

INCH H 22 | W 63 | D 15  
CM H 57 | W 160 | D 38



### SIDEBOARD

POL71SB02

INCH H 30 | W 71 | D 19  
CM H 75 | W 180 | D 47



### DINING TABLE

POL71DT02

INCH H 13 | W 36 | D 24  
CM H 34 | W 92 | D 62



### COFFEE TABLE

POL36CT02

INCH H 13 | W 36 | D 24  
CM H 34 | W 92 | D 62



### BOOKCASE

POL70BC02

INCH H 70 | W 13 | D 12  
CM H 179 | W 32 | D 31



### DRESUAR MIRROR

POLDRMIR01

INCH H 15 | W 35 | D 1  
CM H 38 | W 90 | D 3



### SIDEBOARD MIRROR

POLSBMIR02

INCH H 15 | W 48 | D 1  
CM H 38 | W 121 | D 3



### DRESUAR

POL47DR02

INCH H 30 | W 35 | D 15  
CM H 77 | W 90 | D 39



# POLKA COLLECTION

## *White marble effect*



Combining the minimal design approach with impressive details, Polka Collection brings a new perspective to modern decoration approach with intricately designed and attractive finishings. Enriching the geometrical design lines with exclusively designed minimal handles, Polka Collection offers an aesthetic design line with its marble pattern details and walnut colour combinations.





### TV STAND

POL71TSB01

INCH H 22 | W 63 | D 15  
CM H 57 | W 160 | D 38



### SIDEBOARD

POL71SB01

INCH H 30 | W 71 | D 19  
CM H 75 | W 180 | D 47



### DINING TABLE

POL71DT01

INCH H 13 | W 36 | D 24  
CM H 34 | W 92 | D 62



### COFFEE TABLE

POL36CT01

INCH H 13 | W 36 | D 24  
CM H 34 | W 92 | D 62



### BOOKCASE

POL70BC01

INCH H 70 | W 13 | D 12  
CM H 179 | W 32 | D 31



### DRESUAR MIRROR

POLDRMIR01

INCH H 15 | W 35 | D 1  
CM H 38 | W 90 | D 3



### SIDEBOARD MIRROR

POLSBMIR02

INCH H 15 | W 48 | D 1  
CM H 38 | W 121 | D 3



### DRESUAR

POL47DR01

INCH H 30 | W 35 | D 15  
CM H 77 | W 90 | D 39

# MONACO *Collection*



Monaco Furniture Collection is a perfect blend of modern elegance and functional design. Featuring a stylish coffee table, TV unit, bookcase, and sideboard with sleek black frames and warm wood accents, this collection adds sophistication to any home.



### TV STAND BLACK ALINA

MON59TS01

INCH H 21,2 / W 59 / D 13,7  
CM H 54 / W 150 / D 35



### TV STAND WALNUT TRAVERTER

MON59TS02

INCH H 22 | W 63 | D 15  
CM H 57 | W 160 | D 38



### SIDEBOARD BLACK ALINA

MON59SB01

INCH H 26,5 / W 59 / D 17,7  
CM H 67,5 / W 150 / D 45



### SIDEBOARD WALNUT TRAVERTER

MON59SB02

INCH H 26,5 / W 59 / D 17,7  
CM H 67,5 / W 150 / D 45



### BOOKCASE WALNUT TRAVERTER

MON69BC01

INCH H 70 | W 13 | D 12  
CM H 179 | W 32 | D 31



### BOOKCASE BLACK ALINA

MON69BC02

INCH H 69,2 / W 33,4 / D 7,8  
CM H 176 / W 85 / D 20



### COFFEE TABLE WALNUT BLACK

MON35CT01

INCH H 15,7 / W 35,4 / D 18,7  
CM H 40 / W 90 / D 47,5



### COFFEE TABLE WALNUT TRAVERTER

MON35CT02

INCH H 15,7 / W 35,4 / D 18,7  
CM H 40 / W 90 / D 47,5



# MANHATTAN *Collection*



Combining the contemporary design with simple but effective details, Manhattan Collection reinterprets living spaces with its timeless elegance. Light walnut colour surfaces add a sophisticated touch to the design when they are combined with the series-black bronze handles.





### 71" TV STAND

MN71TSM01

INCH H 19 | W 71 | D 18  
CM H 49 | W 180 | D 35



### SIDEBOARD TV STAND

MN71CC01

INCH H 30 | W 71 | D 18  
CM H 76 | W 180 | D 45



### 59" TV STAND

MN59TSM01

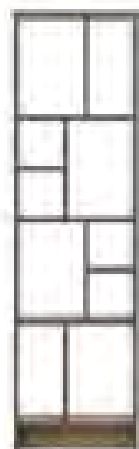
INCH H 19 | W 59 | D 14  
CM H 49 | W 150 | D 35



### 43" COFFEE TABLE

MN43CT01

INCH H 16 | W 43 | D 24  
CM H 40 | W 110 | D 60



### BOOKCASE

MN69BCM0

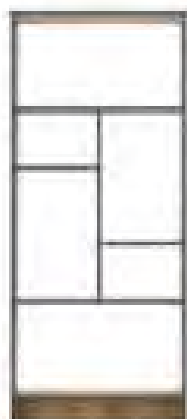
INCH H 69 | W 20 | D 14  
CM H 175 | W 50 | D 35



### 35" COFFEE TABLE

MN35CT01

INCH H 16 | W 35 | D 24  
CM H 40 | W 90 | D 60



### BOOKCASE WIDE

MN69BCB01

INCH H 69 | W 30 | D 14  
CM H 175 | W 76 | D 35



### DINING TABLE

MN63DT01

INCH H 31 | W 63 | D 31  
CM H 79 | W 160 | D 79



# TV STANDS

*"Useful elegance is  
a must for every home!"*

# AHRIS TV Stand

Ahris TV stand is designed by inspiring by UK flag. It is defined by practical functionality and streamlined design. It has five open shelves, these shelves can be turned into cabinets with two sliding doors. This design offers huge storage space for your books, magazines, TV tuner, remote controller, or other media devices/ collections.



- SAPPHIRE OAK WHITE  
AHR55TS01

MATERIAL: 18 MM THICK MANUFACTURED WOOD  
ADJUSTABLE SHELVING: YES  
ASSEMBLY REQUIRED: YES  
5 OPEN SHELVES FOR STORAGE  
DIMENSIONS: H 85 CM / W 140 CM / D 35 CM



- ANTHRACITE WHITE  
AHR55TS02

# AKYA TV Stand

Akya TV stand is designed for larger living rooms and can accommodate TV up to 72". The media stand provides a lot of space for storage with its openshelves. The TV cabinet has 5 solid wood legs.



- WHITE  
AKY63TS02

MATERIAL: 18 MM THICK MANUFACTURED WOOD

ASSEMBLY REQUIRED: YES

LEG MATERIAL-SOLID WOOD

NUMBER OF CUBBIES-6

DIMENSIONS: H 59,5 CM / W 160 CM / D 35 CM



- WALNUT & BLACK  
AKY63TS01



# HONEY TV Stand

Would you like to make a difference in your living room with this unusual TV unit design? Bring a streamlined style to your living room with this TV stand. The modern TV unit has an elegant open shelving design while being both decorative and functional.



- WALNUT & WHITE  
BAL47TS01

MATERIAL: MANUFACTURED WOOD

ADJUSTABLE SHELVING: NO

ASSEMBLY REQUIRED: YES

DIMENSIONS: H 55,5 CM / W 120 CM / D 30 CM



- SONOMO & WHITE  
BAL47TS02

# ASTONA TV Stand

Astona TV stand is defined by practical functionality and streamlined design. The clean-lined stand is supported by a rectangular black metal bar, giving it an industrial feel. Two open side shelves are ideal for books and games, while an open center shelf may easily accommodate a game console or cable box.



MATERIALS: A GRADE METAL, 18 MM THICK MANUFACTURED WOOD

ADJUSTABLE SHELVING: NO

ASSEMBLY REQUIRED: YES

TWO SIZE OPTIONS: W 120 & 150 CM

WIDE SIZE: H 40 CM / W 150 CM / D 35 CM

SMALL SIZE: H 40 CM / W 120 CM / D 35 CM

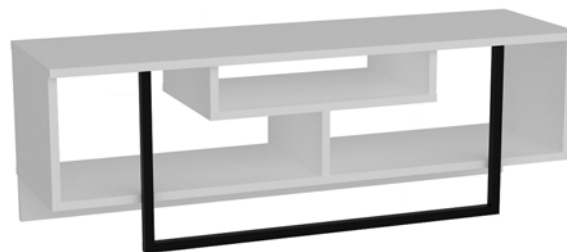
- GOLD & WHITE MARBLE EFFECT

120 CM: ASL47TSM04

150 CM: ASL59TSM04



- WALNUT & BLACK  
120 CM: ASL47TSM01  
150 CM: ASL59TSM01



- WHITE & BLACK  
120 CM: ASL47TSM03  
150 CM: ASL59TSM03



- BLACK MARBLE EFFECT  
120 CM: ASL47TSM05  
150 CM: ASL59TSM05



- GOLD & BLACK MARBLE EFFECT  
120 CM: ASL47TSM06  
150 CM: ASL59TSM06



- WALNUT & WHITE  
120 CM: ASL47TSM09  
150 CM: ASL59TSM09



- BLACK & WHITE MARBLE EFFECT  
120 CM: ASL47TSM11  
150 CM: ASL59TSM11



- OUD OAK & WHITE & BLACK  
120 CM: ASL47TSM02  
150 CM: ASL59TSM02



- WHITE & GOLD  
120 CM: ASL47TSM07  
150 CM: ASL59TSM07



- WHITE MARBLE EFFECT  
120 CM: ASL47TSM08  
150 CM: ASL59TSM08



- OUD WHITE  
120 CM: ASL47TSM10  
150 CM: ASL59TSM10



- WHITE & BLACK MARBLE EFFECT  
120 CM: ASL47TSM12  
150 CM: ASL59TSM12



# CHARLIZE TV Stand

Charlize 63" wide TV stand and media console is designed for larger living rooms and can accommodate TVs up to 65". The media stand provides a lot of space for storage with 2 cabinets and 4 open shelves and a top standalone shelf.



- SAPPHIRE OAK&BLACK  
CHA63TS03

MATERIALS: 18 MM THICK MANUFACTURED WOOD

ADJUSTABLE SHELIVING: NO

ASSEMBLY REQUIRED: YES

SOLID WOOD LEGS

DIMENSIONS: H 70 CM / W 160 CM / D 35 CM



- SAPPHIRE OAK&WHITE  
CHA63TS02



- WHITE MARBLE EFFECT  
CHA63TS01

# ERA MODERN *TV Stand*

Stylish and elegant different and unique structure will make this TV stand a new star in your house. Plus, a brand new technique was implemented. Legs are constructed from wooden solid plastic. Overall, it is manufactured using eco-friendly and health-friendly.



- OUD OAK & WHITE  
EGGTSM01

MATERIALS: 18 MM MANUFACTURED WOOD  
ADJUSTABLE SHELVING: NO  
ASSEMBLY REQUIRED: YES  
2 CABINETS WITH DROP DOWN DOORS  
SPECIAL TEXTURE ON THE CABINET DOORS  
DIMENSIONS: H 53 CM / W 180 CM / D 35 CM



# ERISA TV Stand

Bring modern elegance to your living room layout with this geometrically shaped Erisa 140 cm wide TV stand and media console. Media stand is banded with laminated first class PVC edge banding tape. Six open shelves provide a place for a collection of movies and other electronic essentials, while the top accommodates flat screens up to 60".



- WHITE & BLACK  
ERS55TS01

MATERIALS: 18 MM MANUFACTURED WOOD AND GRADE METAL  
ADJUSTABLE SHELVING: NO  
ASSEMBLY REQUIRED: YES  
DIMENSIONS: H 40 CM / W 150 CM / D 35 CM



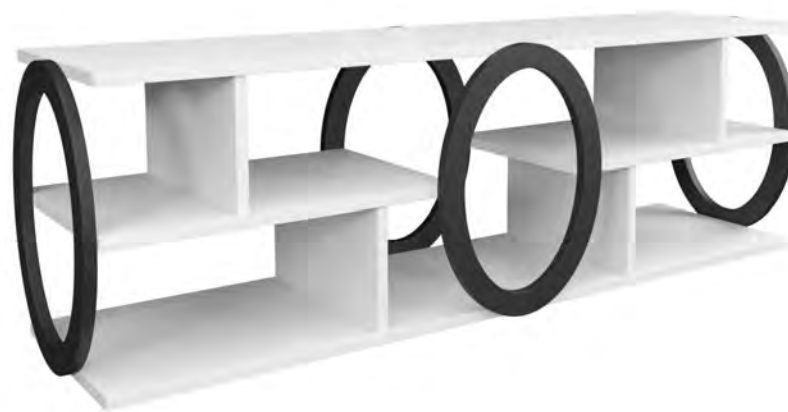
- SAPPHIRE OAK WHITE  
ERS55TS02

# FALE TV Stand

Bring modern elegance to your living room layout with this geometrically shaped Fale 140 cm wide TV stand and media console. Media stand is banded with laminated first class PVC edge banding tape. Six open shelves provide a place for a collection of movies and other electronic essentials, while the top accommodates flat screens up to 60".



- SAPPHIRE OAK & WHITE  
FLE55TS02



- BLACK & WHITE  
FLE55TS01

MATERIALS: 18 MM MANUFACTURED WOOD AND GRADE METAL  
ADJUSTABLE SHELVEING: NO  
ASSEMBLY REQUIRED: YES  
DIMENSIONS: H 45 CM / W 140 CM / D 35 CM

# MIRANDA TV Stand

Join the mid-century trend! The mid-century modern design movement celebrates simple designs with clean lines and a classic feel. With four (two horizontal and two vertical) open shelves and one cabinet, this design offers huge storage space for your books, magazines, TV tuner, remote controller, or other media devices/collections.



- WALNUT & WHITE  
MST55TSB02

MATERIALS: 18 MM MANUFACTURED WOOD  
ADJUSTABLE SHELIVING: NO  
ASSEMBLY REQUIRED: YES  
DIMENSIONS: H 58 CM / W 140 CM / D 35 CM



- BLACK & WALNUT  
MST55TSB01



# LUCY TV Stand

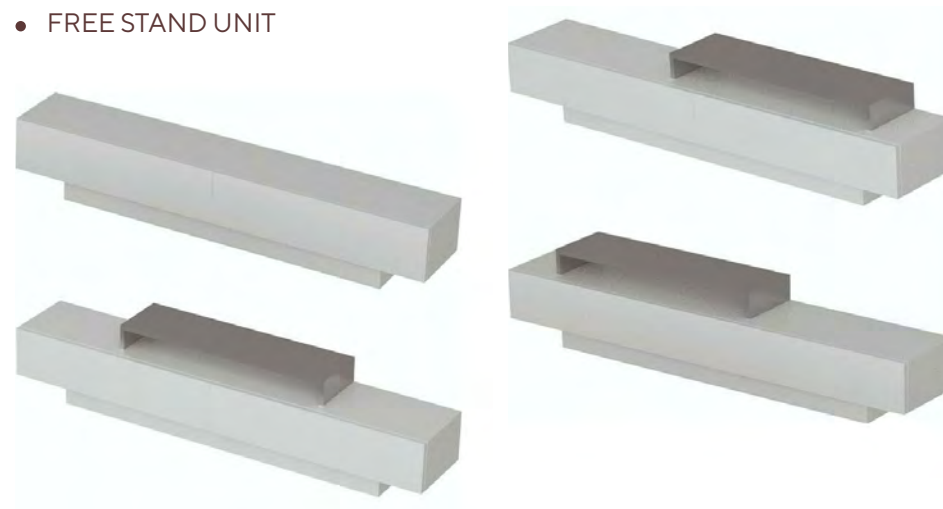
Pure modern and way too artistic. This Lucy TV Stand for TVs up to 60" will shine in your room while storing your entertainment sets. Special design wall shelf would enhance the contemporary visual in your room and add a unique structure.



- CORDOBA WHITE  
LS71TSB02

MATERIALS: 18 MM THICK MANUFACTURED WOOD  
ADJUSTABLE SHELVING: NO  
ASSEMBLY REQUIRED: YES  
2 WALL SHELVES  
2 CABINETS FOR STORAGE  
ACCOMMODATES TVS UP TO 80 INCH  
DIMENSIONS: H 40 CM / W 180 CM / D 31 CM

- FREE STAND UNIT



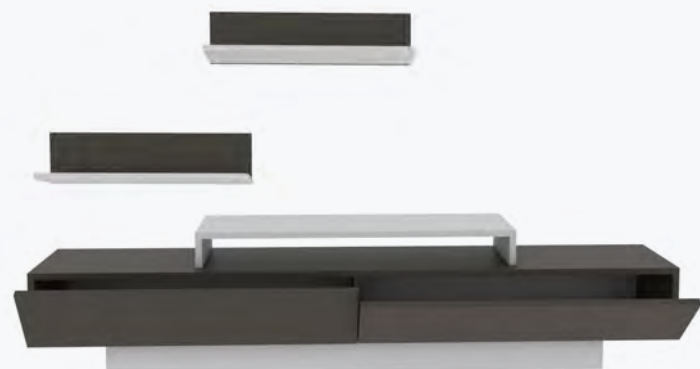




- TEAK WHITE  
LNA71TSB06



- OUD WHITE  
LNA71TSB03



- GALAXY WHITE  
LNA71TSB05



- WALNUT WHITE  
LNA71TSB04

# FIRILA TV Stand

Shaped to nestle into any corner, this TV stand offers a touch of timeless, traditional appeal to any entertainment space. Top this design with a sleek flat-screen TV, then deck out the interior open shelves with your favorite books.



- SAPPHIRE & WHITE  
FRL43TS02



- BLACK & WHITE  
FRL43TS01



- OUD PATTERN & BLACK  
FRL43TS03

MATERIALS: 18 MM THICK MANUFACTURED WOOD  
ADJUSTABLE SHELVING: NO  
ASSEMBLY REQUIRED: YES  
CORNER DESIGN  
OPEN SHELVES  
ACCOMMODATES TVS UP TO 45 INCH  
DIMENSIONS: H 42 CM / W 110 CM / D 35 CM

# KERBY TV Stand

Kerby has a pretty space-saving design, perfectly fitting small living room or office. Featuring two half-open shelves and two cabinets, the media stand offers ample storage space. Carved straight lines on the drop-down doors make the stand stunning. Drop-down doors of the cabinets are opened without handles.



- BLACK & WALNUT  
KER47TS01

MATERIALS: 18 MM THICK MANUFACTURED WOOD

ADJUSTABLE SHELVEING: NO

ASSEMBLY REQUIRED: YES

2 HALF-OPEN SHELVES

2 CABINETS

ACCOMMODATES TVS UP TO 55 INCH

DIMENSIONS: H 71 CM / W 120 CM / D 30 CM



- WHITE  
KER47TS02



- WALNUT & ANTRACITE  
KER47TS03

# DERINNA TV Stand

Derinna 180 cm wide media console with an attractive design can be used as a sideboard console and TV stand at home or in the office. Featuring two half-open shelves and four cabinets, this design offers huge storage space for your books, magazines, TV tuners, remote controllers, or other media devices/collections. Carved straight lines on the drop-down doors make the stand stunning.



- WHITE MARBLE EFFECT & GOLD  
DRN71SB01

MATERIALS: 18 MM THICK MANUFACTURED WOOD AND  
GRADE METAL LEGS

ADJUSTABLE SHELVING: NO

ASSEMBLY REQUIRED: YES

NUMBER OF HALF-OPEN SHELVES - 2

NUMBER OF CABINETS - 4

ACCOMMODATES TVS UP TO 80 INCH

DIMENSIONS: H 64.5 CM / W 180 CM / D 37 CM



- BLACK MARBLE EFFECT  
DRN71SB02



- WALNUT & BLACK  
DRN71SB03



# KARIN TV Stand

Karin is defined by practical functionality and streamlined design. Shaped to nestle into any corner, this TV stand offers a touch of timeless, traditional appeal to any entertainment space.



MATERIALS: 18 MM THICK MANUFACTURED WOOD  
ADJUSTABLE SHELVING: NO  
ASSEMBLY REQUIRED: YES  
EXTRA STORAGE WITH OPEN SHELVES  
CORNER DESIGN  
ACCOMMODATES TVS UP TO 40 INCH  
DIMENSIONS: H 38 CM / W 90 CM / D 35 CM



- SAPPHIRE OAK & WHITE  
KRN35TS01



- BLACK & WHITE  
KRN35TS02



- WALNUT & BLACK  
KRN35TS03



- OUD OAK & BLACK  
KRN35TS04

# LUKAS TV Stand

Stylish and elegant, different and unique structure will make this TV stand a new star in your house. Two cabinets and three open shelves provide ample storage space.



- WHITE & BLACK MARBLE EFFECT LKS59TS01

MATERIALS: 18 MM THICK MANUFACTURED WOOD  
 ADJUSTABLE SHELVING: NO  
 ASSEMBLY REQUIRED: YES  
 NUMBER OF CABINETS - 2  
 NUMBER OF OPEN SHELVES - 2  
 ACCOMMODATES TVS UP TO 64 INCH  
 DIMENSIONS: H 53 CM / W 180 CM / D 35 CM



- WHITE MARBLE EFFECT  
LKS59TS02



- SAPPHIRE OAK & WHITE  
LKS59TS03

# LANCA TV Stand

Lanca TV stand offers a touch of timeless, traditional appeal to any entertainment space. This simple and minimalist media stand is defined by practical functionality and streamlined design. Colour options are available!



MATERIALS: 18 MM THICK MANUFACTURED WOOD

ADJUSTABLE SHELVING: NO

ASSEMBLY REQUIRED: YES

NUMBER OF OPEN SHELVES - 1

ACCOMMODATES TVS UP TO 68 INCH

TWO SIZE OPTIONS: 120 CM AND 150 CM

WIDE SIZE: H 50 CM / W 150 CM / D 35 CM

SMALL SIZE: H 50 CM / W 120 CM / D 35 CM

- BLACK MARBLE EFFECT  
120 CM: LNC47TS01  
150 CM: LNC59TS01





- WHITE  
120 CM: LNC47TS02  
150 CM: LNC59TS02



- WALNUT  
120 CM: LNC47TS03  
150 CM: LNC59TS03



- CORDOBA  
120 CM: LNC47TS04  
150 CM: LNC59TS04



- WHITE MARBLE EFFECT  
120 CM: LNC47TS05  
150 CM: LNC59TS05



- SAPPHIRE OAK  
120 CM: LNC47TS06  
150 CM: LNC59TS06

# LORIN TV Stand

Lorin TV stand is perfect for modern minimalist houses. Reversible use that both front and back sides of the stand can be used as the front side interchangeably. The stand is also enhanced and strengthened with the front metal leg which makes it sturdy and durable. The metal part is coated with scratch and impact-resistant industrial static paint.



- BLACK MARBLE EFFECT  
LRN47TS01



- WHITE MARBLE EFFECT  
LRN47TS02



- GOLD & WHITE MARBLE EFFECT  
LRN47TS03

MATERIALS: A GRADE METAL FRAME AND 18 MM THICK MANUFACTURED WOOD

ADJUSTABLE SHELVING: NO

ASSEMBLY REQUIRED: YES

NUMBER OF OPEN SHELVES - 2

ACCOMMODATES TVS UP TO 68 INCH

DIMENSIONS: H 60 CM / W 120 CM / D 35 CM

# LERZE TV Stand

Special design and unique structure that no other one has. Stylish and elegant, and unique structure will make this TV stand a new star in your house. Two cabinets provide ample storage space.



- BLACK MARBLE EFFECT & WHITE  
LRZ59TS01

MATERIALS: 18 MM THICK MANUFACTURED WOOD AND MDF DOORS  
ADJUSTABLE SHELVING: NO  
ASSEMBLY REQUIRED: YES  
2 CABINETS  
ACCOMMODATES TVS UP TO 64 INCH  
DIMENSIONS: H 38 CM / W 150 CM / D 35 CM



- WHITE MARBLE EFFECT  
LRZ59TS02



- SAPPHIRE OAK & WHITE  
LRZ59TS03

# NORTH TV Stand

North TV stand design offers enormous storage space for your media devices collections. Carved straight cross-lines on the door make the stand stunning. A slightly extended door edge is used as a handle in this design.



- WHITE & GOLD  
NOR51TS01



- WALNUT & BLACK  
NOR51TS02



- BLACK MARBLE EFFECT  
NOR51TS03

MATERIALS: 18 MM THICK MANUFACTURED WOOD AND METAL LEGS

ADJUSTABLE SHELVING: NO

ASSEMBLY REQUIRED: YES

4 HALF- OPEN SHELVES

1 CABINET

ACCOMMODATES TVS UP TO 58 INCH

DIMENSIONS: H 58 CM / W 130 CM / D 35 CM



# NISAY BARN DOOR TV Stand

Eliminate clutter with one move! Nisay is defined by practical functionality and streamlined design. It has five open shelves, these shelves can be turned into cabinets with two sliding doors.



- SAPPHIRE OAK WHITE  
NSY55TS01

MATERIALS: 18 MM THICK MANUFACTURED WOOD  
ADJUSTABLE SHELVING: NO  
ASSEMBLY REQUIRED: YES  
5 OPEN SHELVES AND SLIDING DOORS  
ACCOMMODATES TVS UP TO 63 INCH  
DIMENSIONS: H 85 CM / W 140 CM / D 35 CM



- DARK GREY & WHITE  
NSY55TS02

# OLYO TV Stand

Stylish and elegant, different and unique structure will make this TV stand a new star in your house. One cabinet and four open shelves provide ample storage space.



- WALNUT & WHITE  
OLY55TS01

MATERIALS: 18 MM THICK MANUFACTURED WOOD  
ADJUSTABLE SHELVING: NO  
ASSEMBLY REQUIRED: YES  
NUMBER OF CABINETS - 1  
NUMBER OF OPEN SHELVES - 4  
ACCOMMODATES TVS UP TO 60 INCH  
DIMENSIONS: H 40 CM / W 140 CM / D 35 CM



- SAPPHIRE OAK & WHITE  
OLY55TS02

# OMAR TV Stand

Omar 160 cm wide TV stand and media console is designed for larger living rooms and can accommodate TVs up to 72". The media stand provides a lot of space for storage with its open shelves and cabinets.



- SAPPHIRE OAK & BLACK  
OMR63TS01

MATERIALS: 18 MM THICK MANUFACTURED WOOD  
ADJUSTABLE SHELVING: NO  
ASSEMBLY REQUIRED: YES  
NUMBER OF CABINETS - 2  
NUMBER OF CUBBIES - 4  
ACCOMMODATES TVS UP TO 72 INCH  
DIMENSIONS: H 51 CM / W 160 CM / D 35 CM



- WALNUT & WHITE  
OMR63TS02



- GOLD & WHITE  
OMR63TS03



# PEGAI TV Stand

Whether stationed in your man-cave or put on display in your living room, media stands are always a great addition. Take this one for example: Crafted from 18mm thick quality manufactured wood, it features an array of open shelves that offer up some contemporary appeal, as well as provide a place to showcase favorite photographs, vases, and more.

3 IN 1: TV STAND, CABINET AND BOOKCASE

MATERIALS: 18 MM THICK MANUFACTURED WOOD

ADJUSTABLE SHELVING: NO

ASSEMBLY REQUIRED: YES

NUMBER OF CABINETS - 1

NUMBER OF INTERIOR SHELVES - 2

ACCOMMODATES TVS UP TO 55 INCH

DIMENSIONS: H 120 CM / W 160 CM / D 29.5 CM



- WHITE  
P60TSB01



- OUD BLACK  
P60TSB02



# PICAS

## TV Stand

Picas 160 cm wide modern media stand for TVs up to 72" is defined by practical functionality and streamlined design. With four open shelves and two cabinets, this design offers huge storage space for your books, magazines, TV tuner, remote controller, or other media devices/collections.



MATERIALS: 18 MM THICK MANUFACTURED WOOD  
ADJUSTABLE SHELVING: NO  
ASSEMBLY REQUIRED: YES  
4 SHELVES FOR STORAGE  
2 DROP-DOWN CABINET FOR STORAGE  
ACCOMMODATES TVS UP TO 72 INCH  
DIMENSIONS: H 59 CM / W 160 CM / D 35 CM



- WHITE & BLACK MARBLE EFFECT  
PCS63TS01



- WHITE MARBLE EFFECT  
PCS63TS02



- SAPPHIRE OAK & BLACK  
PCS63TS03



- OUD OAK & WHITE  
PCS63TS04

# PETIT TV Stand

A simple yet contemporary floating TV stand and media console will open up free space and bring in an airy look to your living room. It is not designed to hold a TV, instead, this design requires that the TV must be wall-mounted as shown in the photo. A double-holed adjustable cable management system is specially designed to meet contemporary growing technological needs.



- WHITE  
PET53FTS01

MATERIALS: 18 MM THICK MANUFACTURED WOOD  
ADJUSTABLE SHELVING: NO  
ASSEMBLY REQUIRED: YES  
MULTIPLE OPEN STORAGE SPACE  
ADJUSTABLE CABLE MANAGEMENT SYSTEM  
NOT DESIGNED TO HOLD A TV  
TWO COMPARTMENTS FOR AUDIO/VIDEO  
DIMENSIONS: H 23.2 CM / W 120 CM / D 29.5 CM



- OAD OAK  
PET53FTS02



- BLACK  
PET53FTS03

# PI TV Stand

Pi 63" wide TV stand and media console is designed for larger living rooms and can accommodate TVs up to 72". The media stand provides a lot of space for storage with a large cabinet and two cubbies plus two wall shelves. It features a cable management hole. The TV cabinet has 5 solid wood legs.



- WHITE MARBLE EFFECT  
PI63TS01

MATERIALS: 18 MM THICK MANUFACTURED WOOD  
ADJUSTABLE SHELVING: NO  
ASSEMBLY REQUIRED: YES  
2 CUBBIES AND A CABINET  
2 WALL SHELVES  
SOLID WOOD LEGS  
DIMENSIONS: H 59 CM / W 160 CM / D 34.7 CM



- SAPPHIRE OAK & WHITE  
PI63TS02



- SAPPHIRE OAK & BLACK  
PI63TS03



# PEARL TV Stand

Attractive design and gloss white color make this TV stand unique and unforgettable. Your guests will talk about it more than anything then in your room. Sophisticated design on bird wing style cabinet doors will add an artistic look to your room.



- WHITE  
INC71TSB01

MATERIALS: 18 MM THICK MANUFACTURED WOOD  
ADJUSTABLE SHELVING: NO  
ASSEMBLY REQUIRED: YES  
AMPLE STORAGE SPACE WITH CABINETS AND SHELVES  
BIRD WING STYLE CABINET DOORS  
ACCOMMODATES TVS UP TO 80"  
DIMENSIONS: H 40 CM / W 180 CM / D 30 CM



- WHITE MARBLE EFFECT  
PRL71TS01



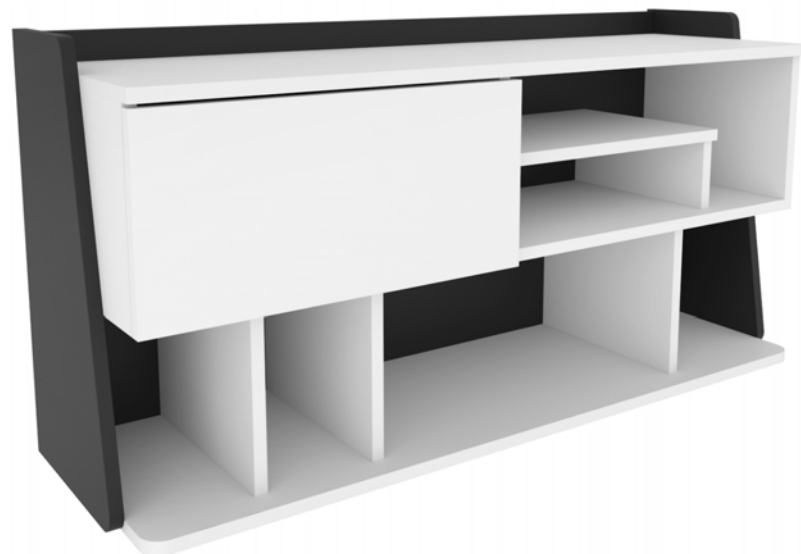
- BLACK MARBLE EFFECT  
PRL71TS02



- WALNUT TRAUFFER  
PRL71TS04

# RACA TV Stand

Raca 120 cm wide modern media stand for TVs up to 55" is defined by practical functionality and streamlined design. With six open shelves and one cabinet, this design offers huge storage space for your books, magazines, TV tuner, remote controller, or other media devices/collections.



- WHITE  
RCA47TS01

MATERIALS: 18 MM THICK MANUFACTURED WOOD  
 ADJUSTABLE SHELVING: NO  
 ASSEMBLY REQUIRED: YES  
 NUMBER OF SHELVES - 6  
 1 DROP-DOWN CABINET  
 ACCOMMODATES TVS UP TO 55"  
 DIMENSIONS: H 59 CM / W 120 CM / D 37 CM



- SAPPHIRE OAK & WHITE  
RCA47TS02



- SAPPHIRE OAK & BLACK  
RCA47TS03



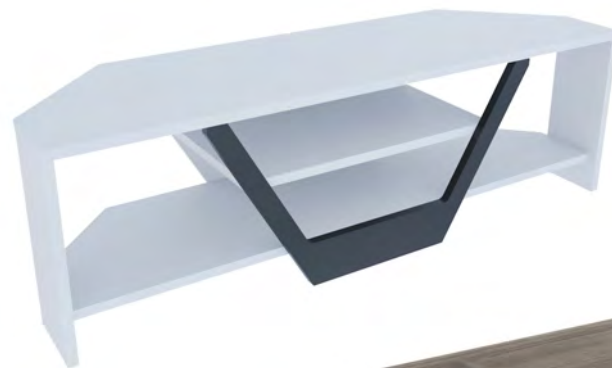
- OUD OAK & WHITE  
RCA47TS04

# SARSILLA TV Stand

Sarsilla 120 cm wide simple and minimalist media stand for TVs up to 55" is defined by practical functionality and streamlined design. Shaped to nestle into any corner, this TV stand offers a touch of timeless, traditional appeal to any entertainment space.



- SAPPHIRE OAK & WHITE  
SRS47TS01



- BLACK & WHITE  
SRS47TS02



- WALNUT & BLACK  
SRS47TS03

MATERIALS: 18 MM THICK MANUFACTURED WOOD  
ADJUSTABLE SHELVING: NO  
ASSEMBLY REQUIRED: YES  
CORNER DESIGN  
OPEN SHELVES  
ACCOMMODATES TVS UP TO 55"  
DIMENSIONS: H 38 CM / W 120 CM / D 35 CM





# STOR TV Stand

Eliminate clutter with one move! Two flexible sliding decorative tambour doors slide along carved and curved track that continues around the oval board. This unique and elegant oval design will become a new star in your house.

MATERIALS: 18 MM THICK MANUFACTURED WOOD  
 ADJUSTABLE SHELVING: NO  
 ASSEMBLY REQUIRED: YES  
 2 CUBBIES AND 7 INTERIOR OPEN SHELVES FOR STORAGE  
 2 FLEXIBLE SLIDING TAMBOUR DOORS  
 ACCOMMODATES TVS UP TO 65"  
 THREE SIZE OPTIONS: 140 CM, 150 CM AND 180 CM  
 SMALL SIZE: H 75 CM / W 140 CM / D 44 CM  
 MIDDLE SIZE: H 75 CM / W 150 CM / D 44 CM  
 LARGE SIZE: H 75 CM / W 180 CM / D 44 CM



- OUD & WHITE  
 140 CM: STO55TS01



- BLACK & ANTHRACITE  
140 CM: STO55TS02



- WHITE & ANTHRACITE  
150 CM: STO59SB01  
180 CM: STO71TS01



- SAPPHIRE OAK & WHITE  
150 CM: STO59SB02  
180 CM: STO71TS02

# ZONAS TV Stand

Zonas 180 cm wide TV stand and media console for TVs up to 55" will shine in your room with its asymmetric and modern look. It has 2 drop-down cabinets and 1 regular cabinet that will provide a huge storage for your books, magazines, and everything that you want to put somewhere out of sight.



MATERIALS: 18MM THICK MANUFACTURED WOOD  
1 REGULAR OPENING CABINET  
2 DROP-DOWN CABINETS  
ACCOMMODATES TVs UP TO 55 INCH  
METAL/PLASTIC HARDWARE  
DIMENSIONS: HEIGHT: 45 CM | WIDTH: 180 CM  
DEPTH: 35 CM | WEIGHT: 29,5 KG



- OUD OAK & WHITE MARBLE EFFECT  
ZON7ITS07



- WHITE & WALNUT  
ZON71TS01



- WHITE & CORDOBA  
ZON71TS02



- WHITE & SAPPHIRE OAK  
ZON71TS03





- WALNUT & WHITE  
ZON71TS04



- CORDOBA & WHITE  
ZON71TS05



- SAPPHIRE OAK & WHITE  
ZON71TS06



- WHITE & BLACK MARBLE EFFECT  
ZON71TS08

# LINOSSA TV Stand

Linossa TV stand, where modernism and elegance come together, will be the most glamorous part of your room. 150 cm wide TV stand and media console accommodates TVs up to 60". Thanks to its cabinets and shelves, it offers you storage for your books, CDs, magazines, etc. Its asymmetrical design provides a different look to your home.



- BLACK & OUD OAK & BLACK MARBLE EFFECT  
LNO55TS03

MATERIALS: 18 MM THICK MANUFACTURED WOOD  
OPEN SHELVES FOR STORAGE  
METAL LEGS  
ACCOMMODATES TVs UP TO 60"  
HEIGHT: 50,5 CM | WIDTH: 150 CM  
DEPTH: 35 CM | WEIGHT: 27 KG



- WHITE & WHITE MARBLE EFFECT & GOLD  
LNO55TS01



- WHITE & BLACK & BLACK MARBLE EFFECT  
LNO55TS02

# LESSON TV Stand

Lesson 120 cm wide stylish and minimalist TV stand for TVs up to 55" is defined by practical functionality and streamlined design. Shaped to nestle into any corner, this TV stand offers a touch of timeless, traditional appeal to any entertainment space. Thanks to its cable management system, tv stand prevent a messy look.



- LESSON TV STAND UD&EFES  
LSS47TS02

CORNER DESIGN  
SIDE OPEN DOORS – FINGER-PULL DOORS  
MADE OF 18MM MANUFACTURED WOOD  
SOLID WOOD LEGS  
ACCOMMODATES TVS UP TO 55 IN.  
HEIGHT: 59,8 CM | WIDTH: 120 CM |  
DEPTH: 45 CM | WEIGHT: 25 KG



- UD&EFES  
LSS47TS02



- WALNUT&BLACK  
LSS47TS03



- WHITE&BENDIR  
LSS47TS01



- SILVA&HAZERAN  
LSS47TS04



- BLACK ALINA  
LSS47TS07



- COTTONBEIGE & BLACK  
LSS47TS06



- WHITE & COTTONBEIGE  
LSS47TS05



# ELIA TV Stand

The stunning Elia Floating TV Unit! With its wall-mounted design, the Elia Floating TV Unit frees up more space in your living area. The downward-opening doors make storage effortless, while the central open shelf provides a perfect spot for your media devices.



- ELIA TV STAND WALNUT WHITE  
ELI55FTS02

WALL MOUNTED DESIGN  
DROP-DOWN CABINET  
CABLE MANAGEMENT  
INCLUDED WALL SHELF  
MADE OF 18MM MANUFACTURED WOOD  
ACCOMMODATES TVS UP TO 60 IN.  
HEIGHT: 25.6 CM | WIDTH: 140 CM | DEPTH: 32 CM  
WEIGHT: 25 KG



- BLACK ALINA  
ELI55FTS01



- WALNUT WHITE  
ELI55FTS02



- EFES&BENDIR  
ELI55FTS03



- BENDIR&EFES  
ELI55FTS04



- SILVA&HAZERAN  
ELI55FTS05



# MORA TV Stand

140 cm Mora corner TV unit allows you to enjoy entertainment without sacrificing living space in your home. Its corner design saves space while providing ample storage. The wooden legs ensure a sturdy and durable structure. The front features an MDF sliding door, allowing you to choose which side to use as an open shelf.

- MORA TV STAND BENDIRE WHITE  
MOR55TS02

CORNER STURDY DESIGN  
ONE SLIDING DOOR  
MEMBRANE COVERED MDF DOOR  
MADE OF 18MM MANUFACTURED WOOD  
CABLE MANAGEMENT  
SOLID WOOD LEGS  
ACCOMMODATES TVS UP TO 63 IN.  
HEIGHT: 54 CM | WIDTH: 140 CM | DEPTH: 45 CM |  
WEIGHT: 28 KG



- BENDIRE WHITE  
MOR55TS02



- WALNUT WHITE  
MOR55TS03



- SAPPHIRE OAK WHITE  
MOR55TS04



- ANTHRACITE WHITE  
MOR55TS01



# TEO TV Stand

The Teo 140 cm wall-mounted TV unit, with its open shelves and sliding MDF door, will not only save space in your room but also provide you with storage. With its sturdy and decorative design, you'll enjoy many features in a single product. A double-holed adjustable cable management system is specially designed to meet technological needs.



- TEO FLOATING ANTRACITE WHITE  
TEO55FTS01

MODERN FLOATING TV STAND  
MDF SLIDING DOOR  
WALL MOUNTING HARDWARE INCLUDED  
18 MM THICK ENGINEERED WOOD  
WOOD FINISH - MELAMINE VENEER  
EDGES ARE BANDED WITH PVC EDGE BAND  
WATER-RESISTANT ENGINEERED WOOD SURFACE  
IT IS NOT DESIGNED TO HOLD A TV  
ADJUSTABLE CABLE MANAGEMENT  
HOLESREMOVABLE SHELF OPTION  
ACCOMMODATES TVS UP TO 63"  
HEIGHT: 29.5 CM / WIDTH: 140 CM / DEPTH: 29.5 CM /  
WEIGHT: 25 KG



- ANTRACITE WHITE  
TEO55FTS01



- BENDIRE WHITE  
TEO55FTS02



- WALNUT WHITE  
TEO55FTS03



- SAPPHIRE OAK WHITE  
TEO55FTS04

# RISO TV Stand

The 180 cm Riso TV unit is the ideal TV unit for spacious living rooms. Thanks to its sliding MDF doors, you don't need extra space to open or close them, and the doors won't bump or scrape against anything. The MDF doors are membrane-coated and feature a modern pattern. The wooden legs not only add a stylish look but also provide a safer and sturdier use.



- RISO ANTRACITE WHITE  
RSO55TS01

SLIDING DOORS  
MEMBRANE COVERED MDF DOOR  
MADE OF 18MM MANUFACTURED WOOD  
CABLE MANAGEMENT  
SOLID WOOD LEGS  
ACCOMMODATES TVS UP TO 65 IN.  
HEIGHT: 54 CM | WIDTH: 180 CM | DEPTH: 35 CM |  
WEIGHT: 30 KG



- ANTRACITE WHITE  
RSO55TS01



- BENDIRE WHITE  
RSO55TS02



- WALNUT WHITE  
RSO55TS03

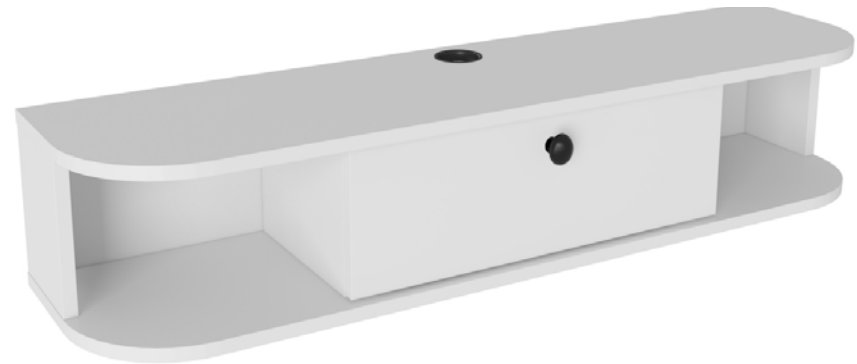


- SAPPHIRE OAK WHITE  
RSO55TS04



# IBARRA FLOATING *TV Stand*

Simple yet contemporary floating TV stand opens up free space and brings in airy look to your living room. It is not designed to hold a TV, the TV must be wall-mounted. Decorotika Ibarra Tv Stand 55" wide media stand features four open shelves providing storage space for devices and media equipment.



- WHITE  
IBA47FTS01



- IBARRA TV STAND WHITE  
IBA47FTS01

3 SHELVES FOR STORAGE  
WALL MOUNTING HARDWARE INCLUDED  
18 MM THICK ENGINEERED WOOD  
WOOD FINISH - MELAMINE VENEER  
EDGES ARE BANDED WITH PVC EDGE BAND  
WATER-RESISTANT ENGINEERED WOOD SURFACE  
IT IS NOT DESIGNED TO HOLD A TV  
ADJUSTABLE CABLE MANAGEMENT HOLES  
ACCOMMODATES TVS UP TO 55"  
HEIGHT: 13 CM / WIDTH: 135 CM / DEPTH: 35 CM /  
WEIGHT: 17 KG



- OAK  
IBA47FTS02



- ANTHRACITE  
IBA47FTS03



- BLACK OUD  
BA47FTS04

# COMERO TV Stand

Comero 100 cm wide stylish and minimalist TV stand for TVs up to 45" is defined by practical functionality and streamlined design. Shaped to nestle into any corner, this TV stand offers a touch of timeless, traditional appeal to any entertainment space. Thanks to its cable management system, tv stand prevent a messy look.



- WHITE  
COM39TS01

CORNER DESIGN  
DROP DOWN CABINET  
OPEN SHELVES  
MADE OF 18MM MANUFACTURED WOOD  
ACCOMMODATES TVS UP TO 45 IN.  
WALL SHELF UNIT  
HEIGHT: 47 CM | WIDTH: 100 CM | DEPTH: 55 CM



- WHITE BENDIRE  
COM39TS02



- OUD BLACK  
COM39TS03



- OAK GALAXY  
COM39TS04



- CORDOBA GALAXY  
COM39TS05



- CORDOBA SILVA  
COM39TS06



# MALDIV TV Stand

Elevate your entertainment space with our stylish Maldiv Corner TV Unit. Crafted from high-quality manufactured wood, this 120 cm wide unit is designed to seamlessly fit into any corner of your room. Its sleek, modern design and three open shelves provide both functionality and aesthetic appeal.



- WHITE  
MLDV47TS01

OPEN SHELVES  
MADE OF 18MM MANUFACTURED WOOD  
ACCOMMODATES TVS UP TO 47 IN.  
HEIGHT: 46,8 CM / WIDTH: 120 CM / DEPTH: 19,6  
CM / WEIGHT: 17 KG



- WALNUT BLACK  
MLDV47TS02



- SILVA  
MLDV47TS03



- KOTON BEIGE  
MLDV47TS04

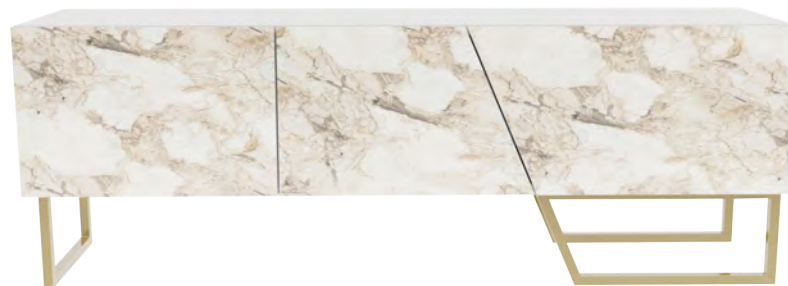
# PARLA TV Stand

Parla 150 cm wide TV stand provides quality and elegance. While its asymmetrical design adds a contemporary look to your room, it provides storage with its cabinets. Thanks to its cabinets, you can store all your belongings easily.



- WHITE & BLACK  
PAR55TS02

MATERIALS: 18 MM THICK MANUFACTURED WOOD  
OPEN SHELVES FOR STORAGE  
METAL LEGS  
ACCOMMODATES TVs UP TO 60"  
HEIGHT: 50,6 CM | WIDTH: 150 CM | DEPTH: 35 CM  
WEIGHT: 26 KG



- WHITE & WHITE MARBLE EFFECT & GOLD  
PAR55TS01



- BLACK & OUD OAK & BLACK MARBLE EFFECT  
PAR55TS03

# DENASSE TV Stand

Denasse TV stand is defined by practical functionality and streamlined design. The clean-lined stand is supported by marble effect style, giving it an elegance feel. With two open shelves and two drop-down cabinets, you can store all your belongings easily.



- WHITE & WHITE MARBLE EFFECT & GOLD  
DNA55TS01

MATERIALS: 18 MM THICK MANUFACTURED WOOD  
OPEN SHELVES FOR STORAGE  
TWO DROP-DOWN CABINETS  
METAL LEGS  
ACCOMMODATES TVS UP TO 60"  
HEIGHT: 50,5 CM | WIDTH: 150 CM | DEPTH: 35 CM



- WHITE & BLACK & BLACK MARBLE EFFECT  
DNA55TS02



- BLACK & OUD OAK & BLACK MARBLE EFFECT  
DNA55TS03



# MISTICO TV Stand

Mistico 180 cm wide simple and minimalist media stand for TVs up to 80" is defined by practical functionality and streamlined design. With four (three vertical and one horizontal) open shelves and two cabinets, this design offers huge storage space for your books, magazines, TV tuner, remote controller or other media devices/collections.



- BLACK AND WALNUT  
MST71TSB01

MATERIAL - 18MM MANUFACTURED WOOD

OPEN SHELVES - 4

TWO DROP-DOWN CABINETS

METAL LEGS

ACCOMMODATES TVS UP TO 80"

HEIGHT: 58,4 CM | WIDTH: 180 CM | DEPTH: 35.6 CM



- BLACK AND WALNUT  
MST71TSB01



- SAPPHIRE OAK WHITE  
MST71TSB02

# LOJO TV Stand

Lojo TV stand and media console is designed for larger living rooms and can accommodate TVs up to 65". The media stand provides a lot of space for storage with 2 cabinets and 2 open shelves and a top standalone shelf.



- BLACK ALINA  
LOJ51TS01

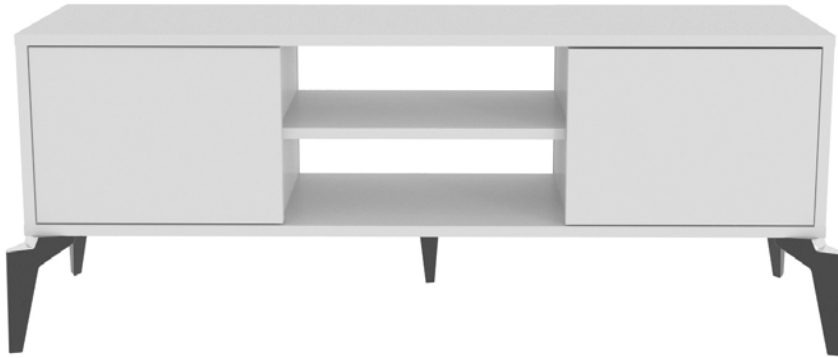
MATERIALS: 18 MM THICK MANUFACTURED WOOD  
ADJUSTABLE SHELVING: NO  
ASSEMBLY REQUIRED: YES  
SOLID WOOD LEGS  
DIMENSIONS: H 52 CM / W 160 CM / D 29,5 CM



- BLACK ALINA  
LOJ51TS01



- WALNUT ALINA  
LOJ51TS02



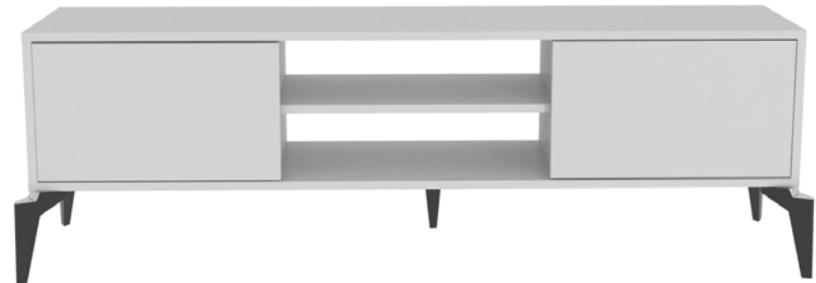
- WHITE  
LOJ51TS03



- 160 UNIT BLACK ALINA  
LOJ63TS01



- 160 WALNUT ALINA  
LOJ51TS02



- 160 WHITE ALINA  
LOJ63TS03



# OFFICE DESKS

*"Create office spaces  
that increase creativity."*



# ADMIRA Desk

Admira computer desk with metal frame and three open shelves just underneath the tabletop provide ample work/storage space as well as an attractive look that will fit various home/office decorations.



- BLACK MARBLE EFFECT  
ADM47CD01

MATERIAL: 18 MM THICK MANUFACTURED WOOD AND A-GRADE METAL  
ASSEMBLY REQUIRED: YES  
3 HALF-OPEN SHELVES FOR STORAGE  
METAL FRAME AND HARDWARE  
DIMENSIONS: H 120 CM / W 120 CM / D 60 CM



- WHITE MARBLE EFFECT  
ADM47CD02



- WHITE MARBLE EFFECT & GOLD  
ADM47CD03

# ANEMONA

## Office Desk

Anemona computer desk with a stylish crossbar metal frame provides an attractive look that will fit the various home and office decor styles. Metal frame/legs are coated with scratch and impact-resistant industrial static paint. Overall, it is manufactured using eco-friendly and health-friendly materials.



- BLACK & WALNUT  
ANE47CD03

MATERIAL: 18 MM THICK MANUFACTURED WOOD  
AND A-GRADE METAL  
ASSEMBLY REQUIRED: YES  
A CROSSBAR METAL FRAME PROVIDES AN EXTRA STURDY  
DIMENSIONS: H 75 CM / W 120 CM / D 60 CM



- WHITE MARBLE EFFECT&GOLD  
ANE47CD02



- WHITE  
ANE47CD01

# FLOATING Desk

This corner office desk features a modern design complete with multiple shelves for versatile storage options. Crafted of manufactured wood in a fashionable finish, this desk is perfect for corners as well as in your study room or office.



- WALNUT  
FLO47CD01

MATERIAL: 18 MM THICK MANUFACTURED WOOD  
BASE MATERIAL: METAL  
CORNER OFFICE DESK  
4- OPEN SHELVES FOR STORAGE  
ASSEMBLY REQUIRED: YES  
DIMENSIONS: H 85 CM / W 120 CM / D 90 CM



- WHITE  
FLO47CD02





- WHITE MARBLE EFFECT & GOLD  
GYZ47CD03

MATERIAL: 18 MM THICK MANUFACTURED WOOD  
 BASE MATERIAL: METAL  
 ASSEMBLY REQUIRED: YES  
 DIMENSIONS: H 75 CM / W 120 CM / D 60 CM

# GYZA Desk

Gyza computer desk with a stylish metal frame provides an attractive look that will fit various home and office decors. Overall, it is manufactured using eco-friendly and health-friendly TSE-certified materials. The product will be delivered to the customer in the original package as disassembled.



- WHITE MARBLE EFFECT  
GYZ47CD02



- BLACK MARBLE EFFECT  
GYZ47CD01



# RINO

## Modern Desk

Rino computer desk with a stylish metal frame provides an attractive look that will fit various home and office decors. Metal frame/legs are coated with scratch and impact-resistant industrial static paint. Overall, it is manufactured using eco-friendly and health-friendly TSE-certified materials. It is designed to be assembled by the customer easily using a power drill.



- WHITE MARBLE EFFECT & GOLD  
RIN35CD03



- WHITE  
RIN35CD02



- BLACK MARBLE EFFECT  
RIN35CD01

MATERIAL: 18 MM THICK MANUFACTURED WOOD  
BASE MATERIAL: METAL  
ASSEMBLY REQUIRED: YES  
DIMENSIONS: H 92 CM / W 133 CM / D 60 CM

# TUMMA

## Modern Desk

Tumma computer desk with metal frame and three half-open shelves just underneath the tabletop provide ample work/storage space as well as an attractive look that will fit various home/office decorations. Metal parts are coated with scratch and impact-resistant industrial static paint. Overall, it is manufactured using eco-friendly and health-friendly TSE-certified materials. It is designed to be assembled by the customer easily using simple household tools like a power drill.



- WALNUT & BLACK  
TMT47CD03

MATERIAL: 18 MM THICK MANUFACTURED WOOD  
BASE MATERIAL: METAL  
ASSEMBLY REQUIRED: YES  
3 HALF-OPEN SHELVES FOR STORAGE  
DIMENSIONS: H 75 CM / W 120 CM / D 62 CM



- WHITE  
TMT47CD02



- WHITE MARBLE EFFECT & GOLD  
TMT47CD01

# VICTORY Desk

Victory office desk with metal frame and one open shelf just underneath the tabletop provides work/storage space as well as an attractive look that will fit various home/office decorations.



- BLACK & WALNUT  
VIC47CD03



- WHITE  
VIC47CD01



- WHITE MARBLE EFFECT & GOLD  
VIC47CD02

MATERIAL: 18 MM THICK MANUFACTURED WOOD AND A-GRADE METAL  
ASSEMBLY REQUIRED: YES  
1 OPEN SHELF FOR STORAGE  
METAL FRAME AND HARDWARE  
DIMENSIONS: H 75 CM / W 120 CM / D 60 CM



# TUNALLI

## Modern Desk

Tunalli computer desk with front-bar provides an attractive look that will fit the various style of home and office decor. The desktop is made of 18mm thick quality melamine coated particle board and banded with first-class PVC edge banding tape, while the stylish frame/legs are constructed from industrial metal. Metal parts are coated with scratch and impact-resistant industrial static paint.



- WHITE  
TUN47CD02

MATERIAL: 18 MM THICK MANUFACTURED WOOD  
BASE MATERIAL: METAL  
ASSEMBLY REQUIRED: YES  
DIMENSIONS: H 75 CM / W 120 CM / D 60 CM



- WALNUT&BLACK  
TUN47CD03

- WHITE MARBLE EFFECT & GOLD  
TUN47CD01



# DESALVO

## Modern Desk

Desalvo 120 cm wide computer desk with a wall shelf provides an attractive look that will go smoothly with any style of home and office decor. Features an accent wall shelf and a corner stand for second monitor. Ideal for use in small spaces to utilize storage and workspace.



- WHITE MARBLE EFFECT  
DES47CD01

MATERIAL: 18 MM THICK MANUFACTURED WOOD  
BASE MATERIAL: METAL  
ASSEMBLY REQUIRED: YES  
CORNER STAND FOR SECOND MONITOR  
DIMENSIONS: H 75 CM / W 120 CM / D 60 CM



- BENDIRE&BLACK  
DES47CD02



# NIGHTSTANDS

*"Always dreamy, day  
and night"*



# ALBA

## Nightstand

Alba nightstand is perfect for modern and minimalist bedrooms. One sliding drawer with roller runner system, tabletop and two open shelves enable you to place your belongings within your arms reach. You can put your decorative items or night lamp on the top surface of the nightstand.

MATERIALS: 18 MM THICK MANUFACTURED WOOD AND METAL

ASSEMBLY REQUIRED: YES

2 OPEN SHELVES

1 DRAWER

DIMENSIONS: H 61.8 CM / W 45 CM / D 45 CM

- BLACK & OUD OAK  
ALB24NS01



# CRESSI

## Nightstand

Designed to showcase our enthusiasm for minimalist functionality. One cabinet, tabletop and shelf enable you to place your belongings within your arms reach. You can put your decorative items or night lamp on the top surface of the nightstand. The metal base makes it attractive, sturdy, and durable.

MATERIALS: 18 MM THICK MANUFACTURED WOOD AND METAL

ASSEMBLY REQUIRED: YES

2 OPEN SHELVES

1 CABINET

DIMENSIONS: H 83 CM / W 45 CM / D 45 CM

- WALNUT & WHITE  
CRS32NS01



# LOSSO *Nightstand*

Dreamy morning moments with Losso Nightstand! Its Oud Oak and White color will fit any bedroom. A cabinet, a sliding drawer and a tabletop enable you to place your belongings within your arms reach. You can put your decorative items or night lamp on the top surface of the nightstand. The solid wood legs make it attractive, sturdy, and durable.

MATERIALS: 18 MM THICK MANUFACTURED WOOD AND METAL

ASSEMBLY REQUIRED: YES

NUMBER OF DRAWERS - 1

NUMBER OF CABINETS - 1

DIMENSIONS: H 77 CM / W 45 CM / D 45 CM

- OUD OAK & WHITE  
LOS25NS01



# NEVA *Nightstand*

Neva metal partical board nightstand is practical and modern. It is a budget-friendly, functional, and modern one. Its walnut and white colour will fit any bedroom. One sliding drawer with roller runner system, tabletop and a cabinet enable you to place your belongings within your arms reach.

ASSEMBLY REQUIRED: YES

NUMBER OF DRAWERS - 1

NUMBER OF CABINETS - 1

DIMENSIONS: H 64 CM / W 45 CM / D 38 CM

- WALNUT & WHITE  
NVA25NS01



- WHITE  
NGS1021

ASSEMBLY REQUIRED: YES  
 NUMBER OF OPEN SHELVES - 2  
 MATERIAL - 18MM MANUFACTURED WOOD  
 DIMENSIONS: 72 CM H X 35.5 CM W X 37.3 CM D

# ULMAN Nightstand

Ullman nightstand has a practical, functional and modern design. While its shelf design provides you with extra storage, it gives your room a stylish look. You can put your decorative items, night lamps, books, magazines, flowers etc.



- OAK  
NGS1022



- ANTHRACITE  
NGS1023



- WENGE  
NGS1029



# JAMOT FLOATING *Nightstand*

Jamot floating night stand offers you a mixture of elegance and quality. Its unusual design adds elegant air to your room. The Jamot nightstand provides storage for your books, accessories, flowers, ect.



- WHITE  
NGS1001

MATERIAL - 18MM MANUFACTURED WOOD  
NUMBER OF DRAWERS - 1  
NUMBER OF OPEN SHELVES - 1  
INTENDED AND APPROVED USE - RESIDENTIAL  
ASSEMBLY REQUIRED - YES  
29 CM H X 44,5 CM W X 31,7 CM D



- OAK  
NGS1002



- ANTHRACITE  
NGS1003



- WENGE  
NGS1009





# ALICE

## Nightstand

Aleph floating night stand offers your room a fresh look. It will be a unique item of your room that everyone would like to have in their home. It provides storage for your books, accessories, flowers, ect with its cabinet and shelf.

- FLOATING NIGHTSTAND OAK  
NGS1042

MATERIAL - 18MM MANUFACTURED WOOD  
NUMBER OF DRAWERS - 1  
NUMBER OF OPEN SHELVES - 1  
INTENDED AND APPROVED USE - RESIDENTIAL  
ASSEMBLY REQUIRED - YES  
34,8 CM H X 39,6 CM W X 31,7 CM D



- WHITE  
NGS1041



- ANTHRACITE  
NGS1043



- WENGE  
NGS1009



# COAT RACKS

*"First impression changes  
everything!"*

# DOGANNA

## Coat Rack

Doganna hall tree is designed to improve the attractive look of the home entrance, foyers, and front halls. It features 5 tier open shelves and a two-door cabinet for storage. While placing shoes or decorative items on/in the open shelves, you can keep your personal belongings in the cabinet. You can use its hooks to hold coats, hats, shoulder bags, scarves, and umbrellas. The metal frame makes the hatstand sturdier and more stunning.



- WALNUT & BLACK  
DGA69HT03

MATERIALS: A GRADE METAL, 18 MM THICK  
MANUFACTURED WOOD

FRAME/LEG - METAL

ASSEMBLY REQUIRED - YES

NUMBER OF CABINETS - 1, NUMBER OF HOOKS - 5,  
NUMBER OF SHELF TIERS - 5

DIMENSIONS: 180 CM H X 90 CM W X 44 CM D



- WHITE MARBLE EFFECT  
& GOLD  
DGA69HT01



- WHITE  
DGA69HT02

# DEVINERO

## Coat Rack

Devinero 180 cm tall hall tree is designed for entrance foyers and front halls. You can use its hooks to hold coats, hats, shoulder bags, scarves, and umbrellas. It also features 2 open shelves and a cabinet with a drop-down door for storage. While placing shoes on/in the open shelves, you can keep your personal belongings in the cabinet. The metal frame and carved straight lines on the drop-down door make the hatstand sturdier and more stunning.



- WALNUT & BLACK  
DVN71HT03

MATERIALS: 18 MM THICK MANUFACTURED WOOD  
FRAME/LEG - METAL  
ASSEMBLY REQUIRED - YES  
NUMBER OF CABINETS - 1, NUMBER OF SHELVES - 2  
DIMENSIONS: 180 CM H X 94 CM W X 35 CM D



- BLACK MARBLE EFFECT  
DVN71HT02



- WHITE MARBLE EFFECT  
DVN71HT01





# COFFEE TABLES

*"The art you can afford!"*

DECOROTIKA



- WALNUT & BLACK  
AKY35CT01

# AKYA

## Coffee Table

Akya 89 cm wide coffee table has elegant and gorgeous design. The cocktail table features large open shelf and an underneath space for storage. Various color variations meet every taste and add a touch of charm and will bring in an excellent mood to your room.



- WHITE  
AKY35CT02



- SAPPHIRE OAK & WHITE  
AKY35CT03

MATERIALS: 18 MM THICK MANUFACTURED WOOD  
ASSEMBLY REQUIRED: YES  
OPEN SHELF FOR STORAGE  
DIMENSIONS: H 44 CM / W 89 CM / D 89 CM

# FLORA

## Coffee Table

Flora coffee/cocktail table with its elegant design and 120 cm wide rectangular tabletop will fit to small and large rooms. It is made of A quality 18 mm melamine coated manufactured wood and first-class metal frame which makes it sturdy and durable. Having a cup of coffee on this modern and elegant table make you feel happy.



- WHITE MARBLE EFFECT & GOLD  
FLR47CT01

MATERIALS: 18 MM THICK MANUFACTURED WOOD AND METAL  
ASSEMBLY REQUIRED: YES  
OPEN SHELF FOR STORAGE  
DIMENSIONS: H 45.8 CM / W 120 CM / D 60 CM



- WHITE MARBLE EFFECT  
FLR47CT02



- BLACK MARBLE EFFECT  
FLR47CT03

# MERI

## Coffee Table

Set a fashion-forward foundation in your living room layout with this on-trend coffee table. Meri budget-friendly coffee table features a rectangular tabletop and an open lower tier shelf that can be used as a storage space for books, board games, and beyond.



- WHITE MARBLE EFFECT & GOLD  
MER17CT01

MATERIALS: 18 MM THICK MANUFACTURED WOOD  
AND A GRADE METAL

ASSEMBLY REQUIRED: YES

OPEN SHELF FOR STORAGE

DIMENSIONS: H 45 CM / W 92 CM / D 64 CM



- BLACK & WALNUT  
MER17CT02





# MIRANDA

## Coffee Table

Magnificent Miranda coffee table is always center of attention! It creates special decor when used with other pieces of the collection. You may also use it separately. The cocktail table features two open shelves and a cabinet for storage. The concealed metal hinge mechanism is used for the 2 drop-down doors. Specially manufactured metal legs make it sturdier and more durable.

- BLACK & WALNUT  
MST47CT01

MATERIALS: 18 MM THICK MANUFACTURED WOOD AND METAL LEGS  
 ASSEMBLY REQUIRED: YES  
 NUMBER OF OPEN SHELVES - 2  
 NUMBER OF CABINETS - 1  
 NUMBER OF DOORS - 2  
 DIMENSIONS: H 46 CM / W 120 CM / D 60 CM



- WHITE & WALNUT  
MST47CT02

# VENDY

## Coffee Table

The perfect living room look with the perfect match of Wendy Coffee Table! Wendy coffee/cocktail table with its elegant design and 120 cm wide rectangular tabletop will fit to small and large rooms. It is made of A quality 18 mm melamine coated manufactured wood and first class metal frame which makes it sturdy and durable. Metal frame is coated with scratch and impact resistant industrial static paint.



- WHITE MARBLE EFFECT & GOLD  
WND47CT01



- WHITE MARBLE EFFECT  
WND47CT02



- BLACK MARBLE EFFECT  
WND47CT03

MATERIALS: 18 MM THICK MANUFACTURED WOOD AND METAL LEGS  
ASSEMBLY REQUIRED: YES  
DIMENSIONS: H 45 CM / W 120 CM / D 60 CM



# SAWYER

## Coffee Table

Let it stylishly stage your eye-catching Sawyer side end table in the master suite, just top it with a glowing lamp and a vase of garden-fresh blooms to keep it simple yet chic. The table top is made of 18mm thick A quality melamine coated particle board and banded with first class PVC edge banding tape. Overall, it is manufactured using eco-friendly and health-friendly TSE certified materials.



- WHITE  
AYZS1001

MATERIALS: 18 MM THICK MANUFACTURED WOOD  
ASSEMBLY REQUIRED: YES  
OPEN SHELF FOR STORAGE  
DIMENSIONS: H 58 CM / W 55 CM / D 18 CM



- OAK  
AYZS1004



- WENGE  
AYZS1002



- ANTHRACITE  
AYZS1007



# NORM

## Coffee Table

It's a yellow love! Let it stylishly stage your eye catching Norm metal partical board side end table in the master suite, just top it with a glowing lamp and a vase of garden fresh blooms to keep it simple yet chic. The tabletop is made of 18mm thick A quality melamine coated particle board and banded with first class PVC edge banding tape while the decorative frame is constructed form industrial metal. Metal frame is coated with scratch and impact resistant industrial static paint.



- WHITE MARBLE EFFECT & GOLD  
NRM21ST01

MATERIALS: 18 MM THICK MANUFACTURED WOOD AND METAL

ASSEMBLY REQUIRED: YES

OPEN SHELF FOR STORAGE

DIMENSIONS: H 55 CM / W 45 CM / D 45 CM



- WHITE MARBLE EFFECT  
NRM21ST02



- BLACK MARBLE EFFECT  
NRM21ST03

# TORINO

## Coffee Table

A glossy finish tops off this eye-catching nesting/coffee table with its solid wood legs add rustic appeal. Use it to bring mid-century style to your living room or to level out a minimalist ensemble. Torino 3-piece coffee table set offers a ton of versatility and functionality. Perfectly nested together you can use the smaller table as an extended surface and tuck it away when you are done or as a completely different unit like even coffee table in the middle of your living room.

MATERIALS: 18 MM THICK MANUFACTURED WOOD AND METAL

ASSEMBLY REQUIRED: YES

COFFEE TABLE - 55 CM H X 38 CM L X 38 CM W

END TABLE - 50 CM H X 38 CM L X 38 CM W

CONSOLE TABLE - 45 CM H X 38 CM L X 38 CM W

- TEAK & CAPPUCINO & CREAM  
TCCTAC01

# ZENAS

## Coffee Table

Let it stylishly stage your eye-catching Zenas side end table in the master suite, just top it with a glowing lamp and a vase of garden-fresh blooms to keep it simple yet chic. The table top is made of 18mm thick A quality melamine coated particle board and banded with first class PVC edge banding tape while the decorative frame is constructed from industrial metal. Metal frame is coated with scratch and impact resistant industrial static paint.



- BLACK MARBLE EFFECT  
ZNS15SET01

MATERIALS: 18 MM THICK MANUFACTURED WOOD  
AND A GRADE METAL

ASSEMBLY REQUIRED: YES

OPEN SHELF FOR STORAGE

DIMENSIONS: H 56 CM / W 40 CM / D 40 CM



- WHITE MARBLE EFFECT  
ZNS15SET02



- WHITE MARBLE EFFECT & GOLD  
ZNS15SET03



# KELVIN

## Coffee Table

With the metal-framed Kelvin coffee table, your living room is now more vibrant. Providing ample space for conversations and movie nights with your loved ones, it will also impress with its modern and stylish design.



- BLACK&OUD  
KLVRCT03

MATERIAL: 18 MM THICK MANUFACTURED WOOD  
 BASE MATERIAL: METAL  
 ASSEMBLY REQUIRED: YES  
 CORNER STAND FOR SECOND MONITOR  
 DIMENSIONS: 50 CM / WIDTH: 120 CM / DEPTH: 60 CM



- OUD WHITE  
TWI2PCT01



# TWINS

## *Nesting Table*

Desalvo 120 cm wide computer desk with a wall shelf provides an attractive look that will go smoothly with any style of home and office decor. Features an accent wall shelf and a corner stand for second monitor. Ideal for use in small spaces to utilize storage and workspace.



- TWINS 2 PIECES NESTING TABLE  
TWI2PCT01

MATERIAL: 18 MM THICK MANUFACTURED WOOD  
BASE MATERIAL: METAL  
ASSEMBLY REQUIRED: YES  
CORNER STAND FOR SECOND MONITOR  
DIMENSIONS: H 75 CM / W 120 CM / D 60 CM



- OUD WHITE  
TWI2PCT01



- GALAXY ALINA  
TWI2PCT03



# BOOKCASES

*"Perfect for  
minimalist homes"*



# ADRIANA Bookcase

Invite a rustic aesthetic into your home with this industrial-style bookcase. Thick manufactured wood and metal frames complement each other to create pieces that look both robust and timeless. Adriana metal wood geometric bookcase adds an enthusiastic atmosphere while providing enough storage for your books, displays, and anything you want to put on.



- BLACK & OUD OAK  
ADR50BCB01

MATERIALS: 18 MM THICK MANUFACTURED WOOD AND METAL  
ASSEMBLY REQUIRED: YES  
OPEN SHELF FOR STORAGE  
DIMENSIONS: H 127 CM / W 90 CM / D 30 CM



- WHITE & OUD OAK  
ADR50BCB02



- WHITE & GOLD  
ADR50BCB03



- WHITE & BLUE  
ADR50BCB04



# ALICA

## Corner Bookcase

The basic yet functional bookshelf will allow you to organize your ornamental objects while also storing your books. This item's unique design allows you to use it in the corners of your room. Enlarging the display space is appropriate for several users.



MATERIALS: 18 MM THICK MANUFACTURED WOOD

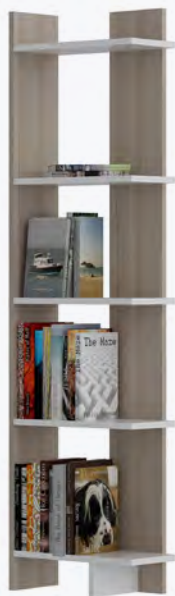
ASSEMBLY REQUIRED: YES

OPEN SHELF FOR STORAGE

DIMENSIONS: H 170 CM / W 45 CM / D 22 CM



- WHITE & WALNUT  
AL67BCB02



- CORDOBA & WHITE  
AL67BCB04



- TEAK & WHITE  
AL67BCB05



- WHITE  
AL67BCB01



- OUD OAK & BLACK  
AL67BCB10



- WHITE MARBLE EFFECT  
AL67BCB11



- BLACK & WHITE  
AL67BCB03

# ESTE Bookcase

Show off framed photos, potted plants, and artful accents in statement-making style with this bookcase. Showcasing a striking silhouette, this modern design has eight tiers of different heights and widths that provide a place for prizes possessions of all sizes. Plus, there's room up top for even more decor. The product comes with two wall mounting brackets so that you can use them to make your bookcase more sturdy and safe.

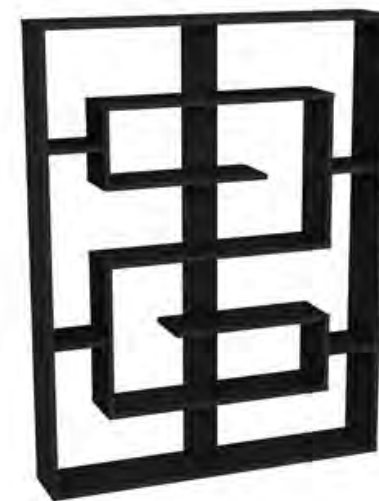


- WHITE  
EST61BCB01

MATERIALS: 18 MM THICK MANUFACTURED WOOD  
ASSEMBLY REQUIRED: YES  
NUMBER OF SHELF TIERS - 8  
DIMENSIONS: H 156 CM / W 120 CM / D 22 CM



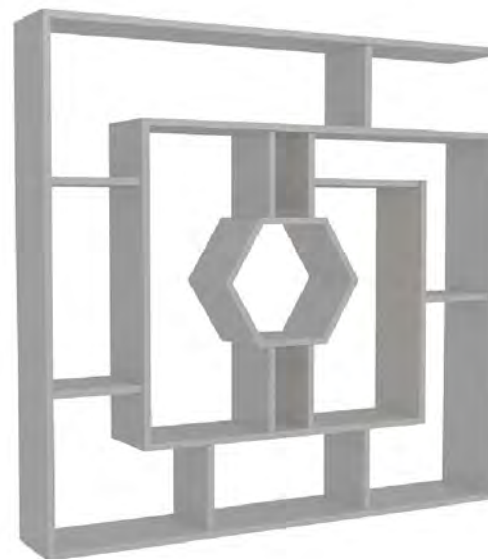
- BLACK & OUD OAK  
EST61BCB02



- BLACK  
EST61BCB03

# LABRINA *Bookcase*

Simple but extraordinary at the same time. Combining modernity and pomp, this bookcase is a stylish decoration in itself. Showcasing a striking silhouette, this modern design has eight tiers of different heights and widths that provide a place for prized possessions of all sizes. Plus, there's room up top for even more decor. The product comes with two wall mounting brackets so that you can use them to make your bookcase more sturdy and secure.

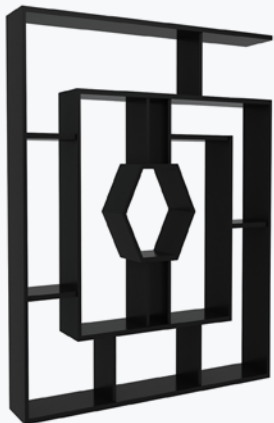


- WHITE  
LBR52BC01

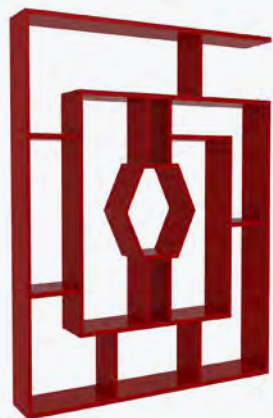


MATERIALS: 18 MM THICK MANUFACTURED WOOD  
ASSEMBLY REQUIRED: YES  
NUMBER OF SHELF TIERS - 8  
DIMENSIONS: H 156 CM / W 120 CM / D 22 CM





- BLACK  
LBR52BC08



- RED  
LBR52BC06



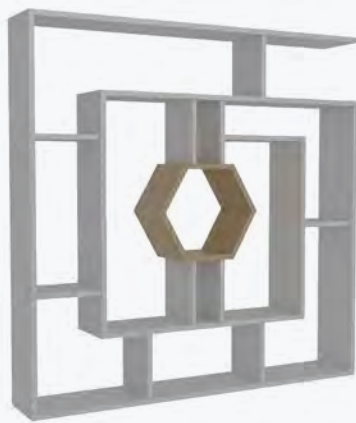
- WALNUT  
LBR52BC04



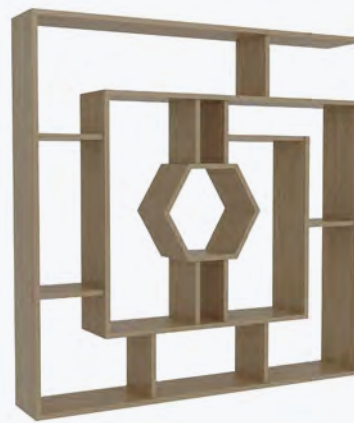
- CORDOBA  
LBR52BC05



- WHITE & WALNUT  
LBR52BC02



- WHITE & SAPPHIRE OAK  
LBR52BC03



- SAPPHIRE OAK  
LBR52BC07



# LUI Bookcase

Luisa 137 tall modern bookshelf has a unique tree-shape design, adding an elegant look to your home/office decor. The bookcase with 4-tier half-backed 8 shelves provides enormous space for storing or displaying your books and decorative items. Side shelves prevent items from falling while back board and the base board ensure a better load-bearing and stability. It can also be used as a storage shelf; plant stand or flower rack.

- WHITE  
LSA54BC01

MATERIALS: 18 MM THICK MANUFACTURED WOOD  
ASSEMBLY REQUIRED: YES  
TIER 8 SIDE SHELVES FOR STORAGE  
SIDE AND BACK SUPPORTING BOARDS  
DIMENSIONS: H 137 CM / W 50 CM / D 22 CM



- WALNUT  
LSA54BC02



- OUD OAK  
LSA54BC03



# ALICA INDUSTRIAL

## *Corner Bookcase*

Looking to cut the clutter? Whip your space in shape with the help of this modern bookcase! Crafted of manufactured wood in a fashionable finish, this bookshelf is perfect for corners as well as in your study room or office. Meet the great mixture of metal and wood for an elegant corner bookcase.

MATERIALS: 18 MM THICK MANUFACTURED WOOD AND GRADE METAL

ASSEMBLY REQUIRED: YES

5-TIER SHELVES

DIMENSIONS: H 180 CM / W 45 CM / D 22 CM



- BLACK & OUD OAK  
MAL71BCB02



- WHITE & OUD OAK  
MAL71BCB01



- WHITE & GOLD  
MAL71BCB03



- WHITE & BLUE  
MAL71BCB04



- WHITE & YELLOW  
MAL71BCB05



- WHITE MARBLE  
EFFECT & GOLD  
MP71BC01



- BLACK MARBLE  
EFFECT & GOLD  
MP71BC02





# MIRANDA

## Bookcase

Miranda 52" tall and 42" wide bookcase has a simple yet attractive design. With 6 half-open shelves and a cubby in the middle, the bookshelf provides a lot of space for storing your books, magazines, and other collections. The shelves are made of 18mm thick standard quality melamine coated particle board and banded with first-class PVC edge banding tape. The legs are constructed from metal and coated with impact and scratch-resistant static paint.

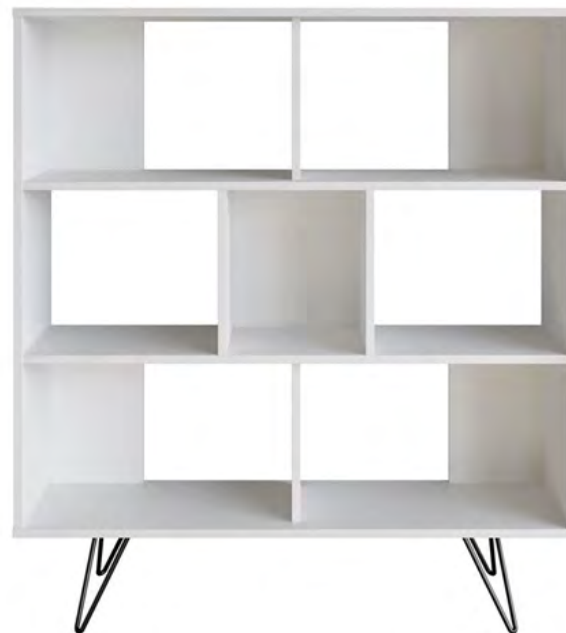
- WALNUT  
MST52BC01

MATERIALS: 18 MM THICK MANUFACTURED WOOD  
AND GRADE METAL LEGS

ASSEMBLY REQUIRED: YES

NUMBER OF HALF-OPEN SHELVES - 7

DIMENSIONS: H 132 CM / W 120 CM / D 29 CM



- WHITE  
MST52BC02

# PAULINA Bookcase

Paulina 174 cms tall metal wood bookcase will add the combination of classic-modern style to your study room with its unique design. Wall mounted interconnected metal frame pieces make it sturdy, elegant and durable. 5-tier shelves will enable you to display your books just like you want. Thanks to its special design, you may place it to any corner and adjust its positions. It can easily be mounted to the wall (wall-mounting hardware included).



- BLACK MARBLE EFFECT  
PAU68LBC02



- WHITE MARBLE EFFECT & GOLD  
PAU68LBC03



- BLACK & OUD OAK  
PAU68LBC04



- WHITE  
PAU68LBC01

MATERIALS: 18 MM THICK MANUFACTURED WOOD AND GRADE METAL

ASSEMBLY REQUIRED: YES

NUMBER OF OPEN SHELVES - 5

DIMENSIONS: H 174 CM / W 60 CM / D 22 CM



- BLACK MARBLE EFFECT  
REM63BC01

MATERIALS: 18 MM THICK MANUFACTURED WOOD AND  
GRADE METAL

ASSEMBLY REQUIRED: YES

NUMBER OF OPEN SHELVES - 5

DIMENSIONS: H 160 CM / W 33 CM / D 30.5 CM

# REMO Bookcase

Meet the great mixture of metal and wood for an elegant corner bookcase. The simple but practical 160 cm tall bookcase will enable you to store your books and organize your decorative items. Special design will allow you to use this item in the corners of your room.



- WHITE MARBLE EFFECT  
REM63BC02



- WHITE MARBLE EFFECT & GOLD  
REM63BC03



# TAMARA Bookcase

Tamara multi-functional bookshelf will allow you to organize your ornamental objects while also storing your books. Showcasing a striking silhouette, this modern design has many tiers of different heights and widths that provide a place for prized possessions of all sizes. Plus, there's room up top for even more decor. The product comes with two wall mounting brackets so that you can use them to make your bookcase more sturdy and secure.



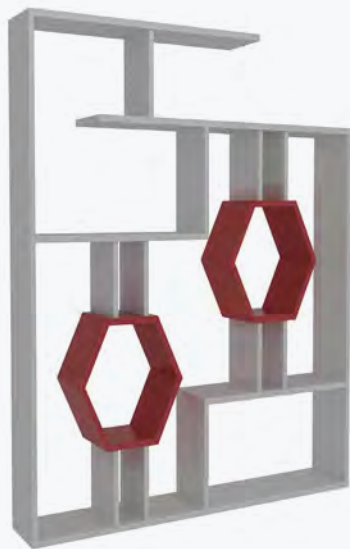
- WHITE & WALNUT  
TMR52BC01

MATERIALS: 18 MM THICK MANUFACTURED WOOD

ASSEMBLY REQUIRED: YES

DIMENSIONS: H 134 CM / W 134 CM / D 22 CM

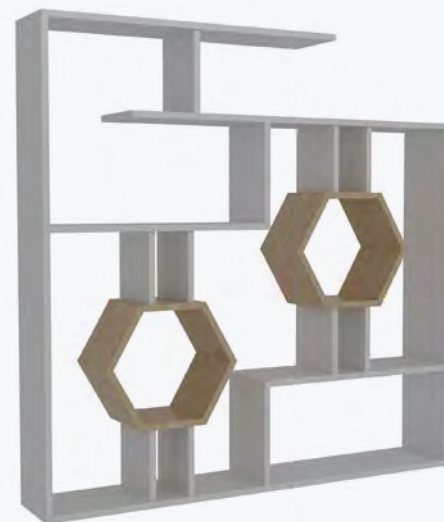




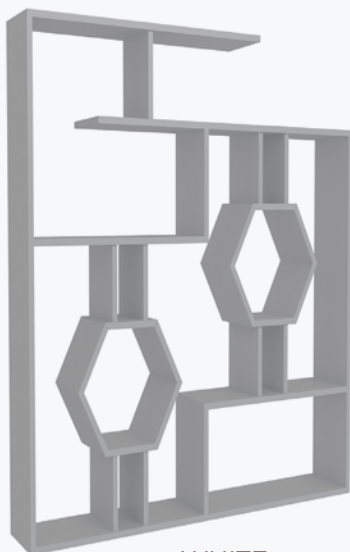
- WHITE & RED  
TMR52BC02



- WHITE & BLACK  
TMR52BC04



- WHITE & SAPPHIRE OAK  
TMR52BC03



- WHITE  
TMR52BC05



- CORDOBA  
TMR52BC07



- WALNUT  
TMR52BC06

# TEXAS *Bookcase*

The basic yet functional bookshelf will allow you to organize your ornamental objects while also storing your books. This item's unique design allows you to use it in the corners of your room. Enlarging the display space is appropriate for several users. The metal frame makes it sturdy, elegant, and durable.



- OUD OAK & BLACK  
TXS71BCB01

MATERIALS: 18 MM THICK MANUFACTURED WOOD  
ASSEMBLY REQUIRED: YES  
5- TIER OPEN SHELVES  
DIMENSIONS: H 180 CM / W 33 CM / D 30 CM



- OUD OAK & WHITE  
TXS71BCB02



- BLACK & WHITE  
TXS71BCB03



- WHITE  
TXS71BCB04



- BLUE & WHITE  
TXS71BCB05



- GOLD & WHITE  
TXS71BCB06

# LETOS Bookcase

Meet Letos bookcase, where the magnificent harmony of metal and wood is at the forefront! Thanks to its modern design, you can use it on every corner of your home. Its shelves and cabinet provide storage for your books, magazines, CDs, vases, etc. It adds a contemporary look to your room.



- ANTHRACITE & GOLD  
LTS32BC02

MATERIALS: 18MM MANUFACTURED WOOD  
4 OPEN SHELVES  
1 CABINET FOR STORAGE  
HARDWARE PACK  
HEIGHT: 80 CM | WIDTH: 60 CM | DEPTH: 29,6 CM | WEIGHT: 17 KG



- WHITE & GOLD  
LTS32BC01





- GREEN & GOLD  
LTS32BC03



- GREEN & WHITE  
LTS32BC04



- ANTHRACITE & WHITE  
LTS32BC05



- WHITE & BLACK  
LTS32BC06



- GREEN & BLACK  
LTS32BC07

# VALERO Bookcase

Valero bookcase has a style that combines past and future. The robust metal structure and the modern melamine-coated chipboard offer you a harmony of elegance. The metal bars on the sides protect objects and have a look with a modern touch. The article has 6 open and 1 closed storage space with a flap door.



- GOLD & GREEN  
VLR47BC02

MATERIALS: 18MM MANUFACTURED WOOD

6 OPEN SHELVES

1 CABINET FOR STORAGE

HEIGHT: 120 CM | WIDTH: 60 CM | DEPTH: 30 CM | WEIGHT: 23 KG



- GOLD & WHITE  
VLR47BC01



- GREEN & GOLD  
LTS32BC03



- WHITE & ANTHRACITE  
LTS32BC04



- WHITE & BLACK  
LTS32BC05



- WHITE & BLACK  
LTS32BC06



- GREEN & BLACK  
LTS32BC07

# PISAGOR Bookcase

Get ready to meet the Pisagor ladder bookcase, which will be the most attractive part of your home with its extraordinary design! Pisagor provides storage for your books, magazines, decorative items, etc. By purchasing two Pisagor bookcase, you get a new look of bookcase and more storage space. Pisagor adds contemporary and stylish atmosphere to your home.



- WHITE MARBLE EFFECT  
PSA52BC01

MATERIALS: 18MM MANUFACTURED WOOD  
UNIQUE GEOMETRIC DESIGN  
FREESTANDING  
4 TIER OPEN SHELVES FOR STORAGE  
HEIGHT: 132 CM | WIDTH: 120 CM | DEPTH: 25 CM | WEIGHT: 22 KG



- BENDIRE & WHITE  
PSA52BC02



- BLACK & OAK  
PSA52BC03

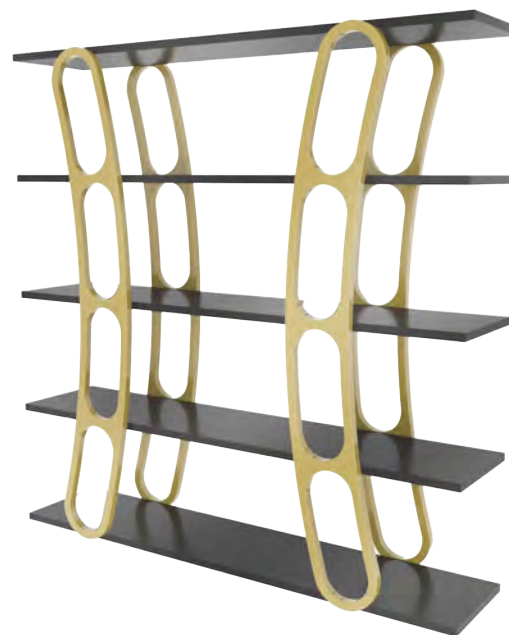




# ADAR Bookcase

With its modern and free style, Adar bookcase is a real eye-catcher and brings a touch of freedom to your home. It is a very suitable product for your books, records, accessories, collections, plants and much more according to your needs.

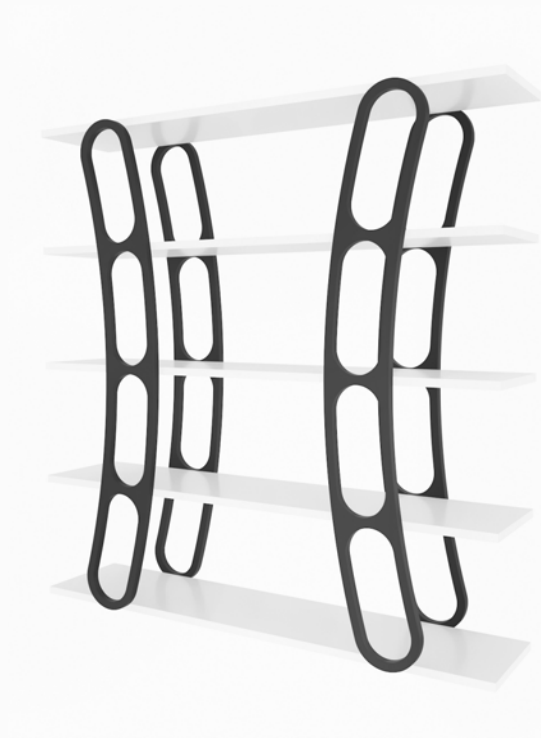
MATERIALS: 18MM MANUFACTURED WOOD  
 UNIQUE GEOMETRIC DESIGN  
 FREESTANDING  
 5 TIER OPEN SHELVES FOR STORAGE  
 HEIGHT: 120 CM | WIDTH: 120 CM | DEPTH: 25 CM | WEIGHT: 23 KG



- BLACK & GOLD  
ADAR47BC02



- WHITE & GOLD  
ADAR47BC01



- WHITE & BLACK  
ADAR47BC03



- BLACK  
ADAR47BC04



# ARROW *Bookcase*

The basic yet functional bookshelf will allow you to organize your ornamental objects while also storing your books. This item's unique design allows you to use it in the corners of your room. Enlarging the display space is appropriate for several users.

MATERIALS: 18MM MANUFACTURED WOOD  
UNIQUE GEOMETRIC DESIGN  
FREESTANDING  
5 TIER OPEN SHELVES FOR STORAGE  
HEIGHT: 120 CM | WIDTH: 120 CM | DEPTH: 25 CM | WEIGHT: 23 KG



- WHITE  
ARW65BC01



- ANTHRACITE  
ARW65BC02



- WALNUT & WHITE  
ARW65BC03



- BLACK & OAK  
ARW65BC04



# GRACE *Bookcase*

Elevate your space with this modern and stylish bookshelf, designed to blend functionality with contemporary aesthetics. With its unique asymmetrical design and ample storage, it's perfect for organizing books, décor, and collectibles in any room.



MATERIALS: 18MM MANUFACTURED WOOD  
UNIQUE GEOMETRIC DESIGN  
FREESTANDING  
5 TIER OPEN SHELVES FOR STORAGE  
HEIGHT: 141 CM | WIDTH: 120 CM | DEPTH: 24,6 CM



- WHITE  
GRC47BC01



- WHITE WALNUT  
GRC47BC02



- BLACK & OAK  
GRC47BC03



# REINA Bookcase

Elevate your space with this modern and sophisticated bookshelf, designed to blend style and functionality effortlessly. Its unique geometric structure, adds a striking touch to any room while providing ample storage for books and décor.

MATERIALS: 18MM MANUFACTURED WOOD  
UNIQUE GEOMETRIC DESIGN  
FREESTANDING  
OPEN SHELVES FOR STORAGE  
HEIGHT: 150 CM | WIDTH: 80 CM | DEPTH: 29,5 CM



- WALNUT TRAVERTER  
REN59BC01



- WHITE WALNUT  
REN59BC02



- WALNUT BLACK  
REN59BC03



# ONNO Bookcase

Meet the fascinating harmony of metal and wood: Onno Bookcase. It will be the most attractive part of your home/office. In addition to books, you can also decorate with home accessories such as vases, flower pots, candles and photographs. Thanks to its modern design, Onno bookcase will provide contemporary look in your home/office.



4-TIER OPEN SHELVES  
MADE OF 18MM MANUFACTURED WOOD  
METAL FRAME  
HEIGHT: 180 CM | WIDTH: 45 CM | DEPTH: 20 CM



- EFES&GOLD  
ONN63BC01



- UD&BLACK  
ONN63BC03



- SILVA&SİYAH  
ONN63BC04



# WALL SHELF

*"Make room for art on  
your walls."*

# SUNO Wall Shelf

Enhance your walls with this stylish and functional shelf, designed to showcase your favorite books, décor, and collectibles. With its modern geometric design and high-quality wood finish, it adds a sophisticated touch to any space.



- **SUNO WALL SHELF  
TRAVERTER**  
SUN35WS02



- **SUNO WALL SHELF  
TRAVERTER WALNUT**  
SUN35WS01

MATERIALS: 18MM MANUFACTURED WOOD  
UNIQUE GEOMETRIC DESIGN  
FREESTANDING  
OPEN SHELVES FOR STORAGE  
HEIGHT: 90 CM | WIDTH: 90 CM | DEPTH: 22 CM





- OUD BLACK  
SUN35WS03



- WHITE WALNUT  
SUN35WS04



# SIDEBOARDS

*"Let modern elegance  
always be by your side!"*

DECOROTIKA

# STOR Console

Stor 150 wide console with a unique and elegant oval design will become a new star in your house. Two flexible sliding decorative Tambour doors slide along the carved and curved track that continues around the oval board. The Tambour doors are made of thin slats of MDF and joined together with a flexible polyester canvas backing mechanism applying membrane vacuum press PVC foil 3D coatings.

- WHITE & ANTHRACITE  
STO59SB01

MATERIAL: 18 MM THICK MELAMINE COATED PARTICLE BOARD  
AND BANDED WITH PVC

METAL/PLASTIC CAM AND LOCK HARDWARE

ASSEMBLY REQUIRED: YES

2 CUBBIES AND 7 INTERIOR OPEN SHELVES FOR STORAGE

DIMENSIONS: 75 CM H X 150 CM W X 43 CM D



- SAPPHIRE OAK & WHITE  
STO59SB02

# ESE Sideboard

Ese 100 cm wide dresuar console table offers a storage/display space for your personal/decorative items and adds an attractive look to your home décor. It is made of an 18 mm thick melamine coated particleboard. Wood edges are banded with PVC edge banding tape. Overall, it is manufactured using eco-friendly and health-friendly TSE-certified materials.

MATERIAL: 18 MM THICK MANUFACTURED WOOD

ASSEMBLY REQUIRED: YES

OPEN SHELVES FOR STORAGE AND NUMBER OF OPEN SHELVES - 2

DIMENSIONS: 90 CM H X 100 CM W X 35 CM D



- WHITE & RED  
ESE39DR04





- WHITE & WALNUT  
ESE39DR03



- WHITE & BLACK MARBLE EFFECT  
ESE39DR02



- WHITE & WHITE MARBLE EFFECT  
ESE39DR01

# PLATIN

## Multi - Purpose Sideboard

Platin 100 cm wide modern cupboard. With five open shelves, two cabinets, and 3 shelves in cabinets, this design offers huge storage space for your boots, shoes, heels, and sneakers. You can also use the open shelves for your everyday bags to grab them and leave your house. The shelves are adjustable so they can be moved up or down for your longer boots, bigger bags, or umbrella. You can design this cupboard with flowers and photos and a keyholder on top of it.



- OAK PATTERN & WHITE  
PLA39CB01

MATERIAL: 18 MM THICK MANUFACTURED WOOD

LEG MATERIAL: METAL

ASSEMBLY REQUIRED: YES

5 SHELVES FOR STORAGE, 3 SHELVES IN CABINETS,  
2 CABINETS FOR STORAGE

DIMENSIONS: 100 CM H X 100 CM W X 35 CM D



- WALNUT PATTERN & BLACK  
PLA39CB02



- CORDOBA & WHITE  
PLA39CB03

# LINES Dresser

Lines 90 cm wide dresser offers a storage/display space for your personal/decorative items and adds a modern look to your home décor. Thanks to its design, you can use it in every room of your home. Lines consists of 4 drawers.



- WHITE  
LNS35DR01

MATERIALS: 18 MM THICK MANUFACTURED WOOD

4 DRAWERS FOR STORAGE

FINGER PULL DESIGN

WATER-RESISTANT

HEIGHT: 81,6 CM / WIDTH: 90 CM / DEPTH: 45 CM / WEIGHT: 41 KG



- CORDOBA  
LNS35DR02



- SAPPHIRE & OAK  
LNS35DR03

# MARES

## Sideboard

Mares 120 cm wide sideboard has unique geometric design. Mares, where elegance and modernity come together, adds a contemporary look to your home. Thanks to its 4 cabinets, it provides storage for your belongings. You can decorate it with plants, home accessories, vases, etc. Be ready to meet with this attractive sideboard!



- WHITE & WALNUT & GOLD  
MRS47SB02

MATERIALS: 18 MM THICK MANUFACTURED WOOD

4 CABINETS

HEIGHT: 81,6 CM | WIDTH: 120 CM | DEPTH: 45 CM | WEIGHT: 52 KG



- WHITE & GOLD  
MRS47SB01



- WHITE & GALAXY & GOLD  
MRS47SB03





# ATLANTIS

## Sideboard

This sleek, stylish Multipurpose Cabinet arrives flat-packed for your convenience, with easy assembly that requires only basic hand tools. Thanks to clearly labeled parts and an intuitive assembly guide, setting it up is a breeze—quick, efficient, and error-free.

- WHITE & GOLD  
MRS47SB01



- ATLANTIS WHITE  
ATL71MPC01

MADE OF 18MM MANUFACTURED WOOD  
HEIGHT: 181.8 CM | WIDTH: 48.6 CM | DEPTH: 30 CM  
| WEIGHT: 35 KG



SPECIAL LINE

*"Fresh and modern  
atmosphere to your room."*

DECOROTIKA



# COMMON FEATURES OF *Special Line Products*

MADE OF 8MM THICK MDF

SCREWLESS DESIGN

TOOL FREE & EASY ASSEMBLY

OAK COLOUR

- **AROS BOOKCASE**  
AROS39BC01

HEIGHT: 100 CM | WIDTH: 61,5 CM | DEPTH: 25 CM



• **AYZI BOOKCASE**  
AYZI54BC01

HEIGHT:138CM | WIDTH: 62CM | DEPTH: 33CM



• **FESA BOOKCASE**  
FSA32BC01

HEIGHT: 80,5CM | WIDTH: 65,6CM | DEPTH:38CM



• **ORSA CORNER BOOKCASE**  
ORS71BC01

HEIGHT: 180 CM | WIDTH: 58 CM | DEPTH:31,6 CM





- **YUVAR BOOKCASE**  
YVR54BC01

HEIGHT: 138 CM | WIDTH: 39 CM | DEPTH: 39 CM



- **LIVA BOOKCASE**  
LVA54BC01

HEIGHT: 138 CM | WIDTH: 31 CM | DEPTH: 28 CM



- **MENSI CORNER TV STAND**  
MNS47TS01

HEIGHT: 5 CM | WIDTH: 120 CM | DEPTH: 49 CM



- **HIKO 3 PIECES WALL SHELF**  
HIK25WS01

HEIGHT: 6,5 CM | WIDTH: 61,5 CM | DEPTH:19,5 CM



- **SILYA 3 PIECES WALL SHELF**  
SLY3PWS01

SMALLEST SHELF: HEIGHT: 25 CM  
WIDTH: 20 CM | DEPTH:15 CM

MIDDLE SHELF: HEIGHT: 25 CM  
WIDTH: 30 CM | DEPTH:15 CM

BIGGEST SHELF: HEIGHT: 25 CM  
WIDTH: 40 CM | DEPTH:15 CM



- **FORE WALL SHELF**  
FORE26WS01

HEIGHT: 35 CM | WIDTH: 65 CM | DEPTH:22 CM



## BATHROOM COLLECTION

*"Revolutionize your bathroom  
with the elegant vanities"*

**DECOROTIKA**

# KARDELEN

## Bathroom Vanity

Experience the epitome of aesthetics and functionality with this stunning bathroom cabinet. Featuring an elegant sink, spacious storage, and meticulously designed details, it offers a perfect solution for your needs. The additional downward-opening cabinet on top provides an ideal space for organizing personal belongings, while the specially designed backsplash prevents water splashes on the wall, adding both functionality and aesthetic appeal.



- SEA-GREEN  
BV47SG01

MATERIALS: 18 MM THICK MANUFACTURED WOOD AND MDF  
 MATERIAL OF SINK: MARBLEITE  
 NUMBER OF CABINETS: 2  
 NUMBER OF DRAWERS: 3  
 ASSEMBLY REQUIRED: NO  
 DIMENSIONS: H 90 CM / W 120 CM / D 60 CM



- SEA-GREEN  
BV47SG01





- DARK-BLUE  
H 90 CM / W 80 CM / D 60 CM  
BV31DB01



- SEA-GREEN  
H 90 CM / W 80 CM / D 60 CM  
BV31SG01



- TURQUOISE  
H 90 CM / W 80 CM / D 60 CM  
BV31TQ01



- WHITE  
H 90 CM / W 80 CM / D 60 CM  
BV31WH01



- DARK-BLUE  
H 90 CM / W 120 CM / D 60 CM  
BV47DB01



- SEA-GREEN  
H 90 CM / W 120 CM / D 60 CM  
BV47SG01



- TURQUOISE  
H 90 CM / W 120 CM / D 60 CM  
BV47TQ01



- WHITE  
H 90 CM / W 120 CM / D 60 CM  
BV47WH01



- DARK-BLUE  
H 90 CM / W 150 CM / D 60 CM  
BV59DB01



- SEA-GREEN  
H 90 CM / W 150 CM / D 60 CM  
BV59SG01



- TURQUOISE  
H 90 CM / W 150 CM / D 60 CM  
BV59TQ01



- WHITE  
H 90 CM / W 150 CM / D 60 CM  
BV59WH01



- DARK-BLUE  
H 90 CM / W 180 CM / D 60 CM  
BV71DB01



- SEA-GREEN  
H 90 CM / W 180 CM / D 60 CM  
BV71SG01



- TURQUOISE  
H 90 CM / W 180 CM / D 60 CM  
BV71TQ01



- WHITE  
H 90 CM / W 180 CM / D 60 CM  
BV71WH01



# PAPATYA

## Bathroom Vanity

Elevate your bathroom with our sleek and functional vanity! Elegant sink, spacious storage, and meticulous design make it the perfect solution. Standout features include a two-door main compartment and a clever top cabinet for organized storage. Plus, our specially designed backsplash adds both style and practicality, ensuring your bathroom is chic and functional.



- DARK BLUE  
BV47DB02

MATERIALS: 18 MM THICK MANUFACTURED WOOD AND MDF  
MATERIAL OF SINK: MARBLEITE  
NUMBER OF CABINETS: 2  
NUMBER OF DRAWERS: 3  
ASSEMBLY REQUIRED: NO  
DIMENSIONS: H 90 CM / W 120 CM / D 60 CM



- DARK BLUE  
BV47DB02



- DARK-BLUE  
H 90 CM / W 80 CM / D 60 CM  
BV31DB02



- SEA-GREEN  
H 90 CM / W 80 CM / D 60 CM  
BV31SG02



- TURQUOISE  
H 90 CM / W 80 CM / D 60 CM  
BV31TQ02



- WHITE  
H 90 CM / W 80 CM / D 60 CM  
BV31WH02



- DARK-BLUE  
H 90 CM / W 120 CM / D 60 CM  
BV47DB02



- SEA-GREEN  
H 90 CM / W 120 CM / D 60 CM  
BV47SG02



- TURQUOISE  
H 90 CM / W 120 CM / D 60 CM  
BV47TQ02



- WHITE  
H 90 CM / W 120 CM / D 60 CM  
BV47WH02



- DARK-BLUE  
H 90 CM / W 150 CM / D 60 CM  
BV59DB01



- SEA-GREEN  
H 90 CM / W 150 CM / D 60 CM  
BV59SG01



- TURQUOISE  
H 90 CM / W 150 CM / D 60 CM  
BV59TQ01



- WHITE  
H 90 CM / W 150 CM / D 60 CM  
BV59WH01





- DARK-BLUE  
H 90 CM / W 180 CM / D 60 CM  
BV71DB02



- SEA-GREEN  
H 90 CM / W 180 CM / D 60 CM  
BV71SG02



- TURQUOISE  
H 90 CM / W 180 CM / D 60 CM  
BV71TQ02



- WHITE  
H 90 CM / W 180 CM / D 60 CM  
BV71WH02



# SAHRA

## *Bathroom Vanity*

Upgrade your bathroom with this elegant and functional vanity, designed to bring both style and practicality to your space. Available in a variety of sizes and colors, it seamlessly fits any bathroom aesthetic while providing ample storage for your essentials. .

- VANITY WHITE  
SAHR25VNT01

MATERIALS: 18 MM THICK MANUFACTURED WOOD AND MDF  
MATERIAL OF SINK: MARBLEITE  
NUMBER OF CABINETS: 2  
NUMBER OF DRAWERS: 1  
ASSEMBLY REQUIRED: NO  
IT IS AVAILABLE IN DIFFERENT SIZES



- VANITY ANTHRACITE  
SAHR25VNT02



- VANITY SEA GREEN 60 CM  
SAHR39VNT04



- VANITY WHITE 60 CM  
SAHR25VNT01



- VANITY ANTHRACITE 60 CM  
SAHR25VNT02



- VANITY WALNUT 60 CM  
SAHR25VNT03



- VANITY WHITE 80 CM  
SAHR31VNT01



- VANITY ANTHRATICE 80 CM  
SAHR31VNT02



- VANITY WALNUT 80 CM  
SAHR31VNT03



- VANITY GREEN SEA 80 CM  
SAHR31VNT04





- VANITY WHITE 100 CM  
SAHR31VNT01



- VANITY ANTHRATICE 100 CM  
SAHR31VNT02



- VANITY WALNUT 100 CM  
SAHR31VNT03



- VANITY GREEN SEA 100 CM  
SAHR31VNT04

# KATARIN

## Bathroom Vanity

Embrace a harmonious blend of functionality and aesthetic appeal with this bathroom vanity that goes beyond the basics to enhance your daily routine. It maximizes utility, making it perfect for optimizing limited bathroom areas. Essentials neatly stored with a top-opening cabinet and a shelf.



- WHITE & WHITE

MATERIALS: 18 MM THICK MANUFACTURED WOOD AND MDF  
 MATERIAL OF SINK: MARBLEITE  
 NUMBER OF CABINETS: 1  
 NUMBER OF SHELF: 1  
 ASSEMBLY REQUIRED: NO  
 DIMENSIONS: H 45 CM / W 61 CM / D 45 CM



- BLACK & WHITE

# LANEZSA

## Bathroom Vanity

Unleash a breath of fresh air into your bathroom with the sleek and modern design of our vanity. The clean lines and contemporary silhouette of the Lanezsa Vanity ensure it's not just a practical addition, but a stylish statement in any limited space. Transform your bathroom into a chic retreat without sacrificing precious square footage.



- BLACK & WHITE

MATERIALS: 18 MM THICK MANUFACTURED WOOD AND MDF  
MATERIAL OF SINK: MARBLEITE  
NUMBER OF CABINETS: 2  
NUMBER OF SHELF: 1  
ASSEMBLY REQUIRED: NO  
DIMENSIONS: H 45 CM / W 76,2 CM / D 45 CM



- WHITE & WHITE

# POLY

## Bathroom Vanity

Crafted with meticulous attention to detail, our Poly Vanity seamlessly combines form and function. Featuring clever storage solutions, this vanity maximizes space efficiency without compromising on style. Organize your essentials effortlessly and maintain a clutter-free oasis.



- WHITE & WHITE

MATERIALS: 18 MM THICK MANUFACTURED WOOD AND MDF  
 MATERIAL OF SINK: MARBLEITE  
 NUMBER OF CABINETS: 2  
 NUMBER OF SHELVES: 2  
 ASSEMBLY REQUIRED: NO  
 DIMENSIONS: H 45 CM / W 76,2 CM / D 45 CM



- BLACK & WHITE



# SANTANA

## Bathroom Vanity

Unleash a breath of fresh air into your bathroom with the sleek and modern design of our vanity. The clean lines and minimalist approach create a visually appealing focal point, giving your space a timeless, sophisticated look. Elevate your bathroom decor effortlessly with this contemporary masterpiece.



- WHITE & WHITE

MATERIALS: 18 MM THICK MANUFACTURED WOOD AND MDF  
MATERIAL OF SINK: MARBLEITE  
NUMBER OF CABINETS: 2  
ASSEMBLY REQUIRED: NO  
DIMENSIONS: H 45 CM / W 61 CM / D 45 CM



- BLACK & WHITE



## SOFA COLLECTION

*"Unleash Your Comfort  
Zone with Decorotika"*

**DECOROTIKA**

# KALE Corner Sofa

Elevate your living space with Kale Corner Sofa – a harmonious blend of comfort, style, and functionality. Crafted with precision and care, this versatile piece is designed to transform your home into a haven of relaxation and sophistication. The product can be installed as a right or left corner set according to your preference, ensuring a perfect fit for any room layout.

- DARK GRAY  
KLEC215-DGR



MATERIALS OF SOFA STRUCTURE: 1ST QUALITY  
CHIP, MDF & METAL  
MATERIALS OF FABRIC: LINEN EFFECT FABRIC  
MATERIAL OF CUSHIONS: 28 DNS SOFT SPONGE  
MATERIAL OF LEGS: WOOD

- BLUE  
KLEC215-BL



- GREEN  
KLEC215-BG





# KALE

## 3-Seat Sofa

Whether you're entertaining guests or enjoying a quiet night in, our corner sofa effortlessly combines versatility and elegance to enhance your living space. Unleash the potential of your space with the sofa's integrated chest, providing ample storage for your essentials.

- DARK GRAY  
KLE3S205-DGR



- GREEN  
KLE3S205-GN



- BLUE  
KLE3S205-BL



MATERIALS OF SOFA STRUCTURE: 1ST QUALITY  
CHIP, MDF & METAL  
MATERIALS OF FABRIC: LINEN EFFECT FABRIC  
MATERIAL OF CUSHIONS: 28 DNS SOFT SPONGE  
MATERIAL OF LEGS: WOOD



# KEFIR

## Corner Sofa

Transform your living space into a dynamic oasis with our cutting-edge Kefir Corner Sofa – a fusion of contemporary design, youthful flair, and unparalleled comfort. The universal configuration allows you to personalize your space, installing the sofa as a right or left corner set, ensuring it adapts effortlessly to your vibrant decor.

- LIGHT GRAY  
KRFC218-LGR



MATERIALS OF SOFA STRUCTURE: 1ST QUALITY  
CHIP, MDF & METAL  
MATERIALS OF FABRIC: LINEN EFFECT FABRIC  
MATERIAL OF CUSHIONS: 28 DNS SOFT SPONGE  
MATERIAL OF LEGS: WOOD

- DARK GRAY  
KRFC218-DGR



- BLUE  
KRFC218-BL



- GREEN  
KRFC218-GN



# KEFIR

## 3-Seat Sofa

Step into the future of home design with our cutting-edge Kefir Sofa – a dynamic blend of sleek aesthetics, youthful charm, and unparalleled coziness. Immerse yourself in a harmonious balance of style and practicality that caters to the trendy, modern living experience.

- BLUE  
KFT3S208-BL

- GREEN  
KFT3S208-GN



MATERIALS OF SOFA STRUCTURE: 1ST QUALITY CHIP, MDF & METAL  
 MATERIALS OF FABRIC: LINEN EFFECT FABRIC  
 MATERIAL OF CUSHIONS: 28 DNS SOFT SPONGE  
 MATERIAL OF LEGS: WOOD



# KLAS

## Corner Sofa

Infuse your space with sophistication using linen-patterned fabric, imparting a chic and contemporary vibe to the sofa's exterior. Seamlessly transition from fashionable seating to a cozy bed, catering to the needs of the contemporary dweller with a penchant for versatility.

- DARK GRAY  
KLASC218-DGR



MATERIALS OF SOFA STRUCTURE: 1ST QUALITY  
CHIP, MDF & METAL  
MATERIALS OF FABRIC: LINEN EFFECT FABRIC  
MATERIAL OF CUSHIONS: 28 DNS SOFT SPONGE  
MATERIAL OF LEGS: WOOD

- LIGHT GRAY  
KLASC218-LGR



- BLUE  
KLASC218-BL



- GREEN  
KLASC218-GN





# KLAS

## 3-Seat Sofa

Experience sublime comfort with the 28 DNS soft sponge, offering a luxurious seating sensation that perfectly complements the sofa's dynamic profile. Wooden legs add a touch of natural allure, bridging the gap between modernity and organic beauty.

- DARK GRAY  
KLAS3S208-DGR



MATERIALS OF SOFA STRUCTURE: 1ST QUALITY CHIP, MDF & METAL  
 MATERIALS OF FABRIC: LINEN EFFECT FABRIC  
 MATERIAL OF CUSHIONS: 28 DNS SOFT SPONGE  
 MATERIAL OF LEGS: WOOD

- LIGHT GRAY  
KLAS3S208-LGR



- BLUE  
KLAS3S208-BL



- GREEN  
KLAS3S208-GN







# COOPERATION

*"We can reach anywhere"*



## Wholesale and Business Inquiries

We are available for your any enquiries and questions. Please do contact us to request our latest catalogue and trade prices.

We are also glad to arrange a buyers or telephone meeting at your convenience. We do like to get a feel for potential new customers so that we can assist you in the best possible way therefore when you send an enquiry.

For cooperation: **hello@decorotika.com**





## Our Commitment to Environment

Decorotika is the first fully solar energy powered modular furniture manufacturer in Turkey. We want to create more sustainable and clean energy resources to decrease our carbon footprint. We obtain 80% of total power from solar panels installed on our factory roof.

# Private Label

What about to create your dream design together? We support our customers in realizing their own projects and collections.

If you already have product or a potential product idea, you are more than welcome! Our R&D team immediately starts working to bring your project to life, and we manufacture your products together.

Our private label process is as follows.

## **Product Design**

**Professional Drawing & Creating Images.**

**Deciding on Quality of materials**

**Packaging Design:** *We produce our own boxes and good news is you put your logo if you want it too!*

**Costing**

**Manufacturing the Prototype**

**Finalizing the Project.**





Feel free to say hello to us for any type of cooperation!

**hello@decorotika.com**

## Our Branches

### Turkey

---

Balıklıçeşme Köyü OSB  
Mevkii Mavi cad. No:58,  
D:1, 17200 Biga/Çanakkale,  
Türkiye

### United States of America

---

261 Quigley Blvd Suite 15,  
New Castle, DE 19720, United  
States

### United Kingdom

---

1-2 Hampshire Terrace, 3rd  
Floor, Portsmouth, UK, PO1  
2QF

### Germany

---

Am Lückefeld 84  
15831 Blankenfelde – Mahlow  
(Berlin)





